

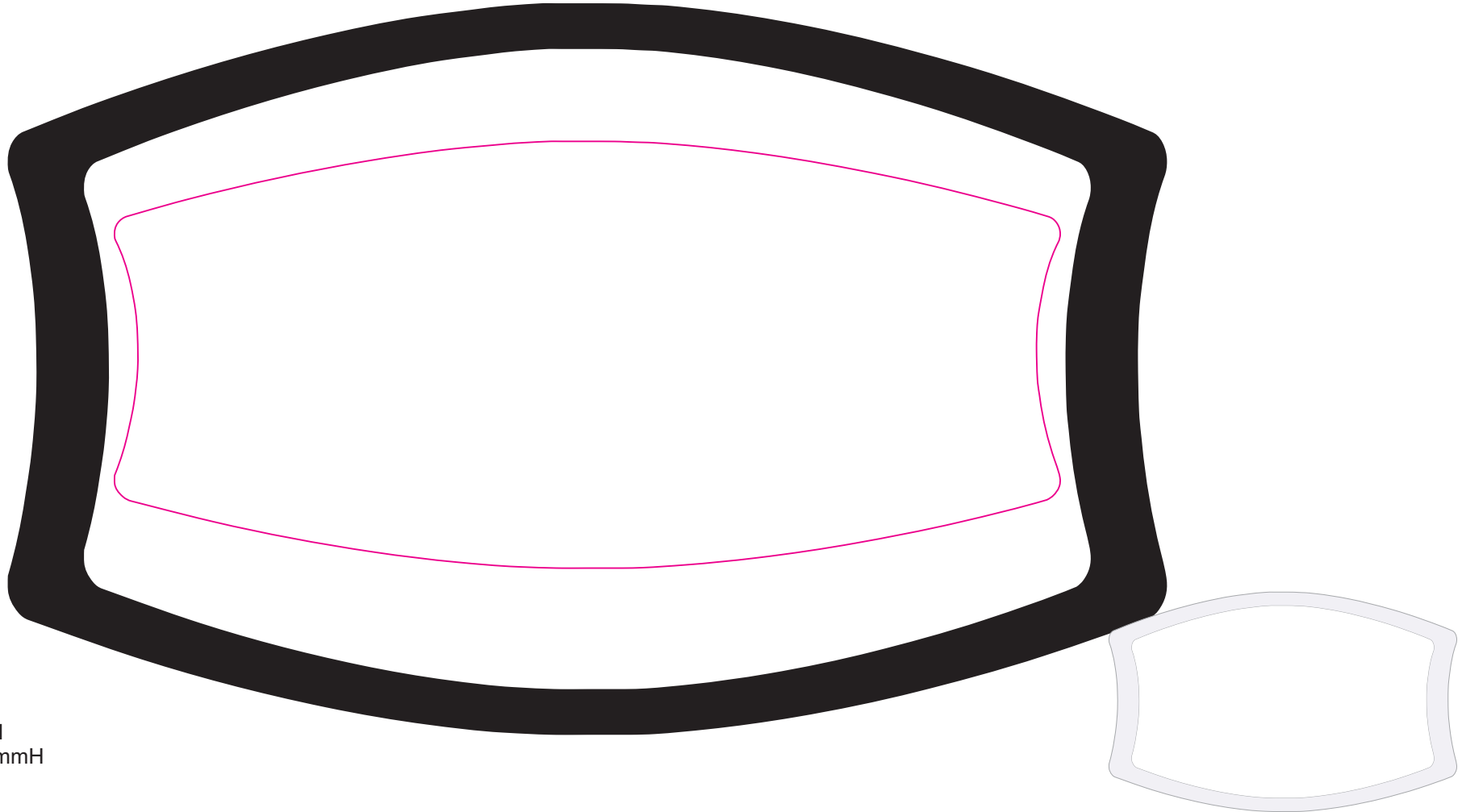
LN8890 - Cotton Face Mask with toggles - Black/White or White

Heat Transfer



Note these are not medical grade devices - Masks will vary in size design positioning can not be guaranteed.

Masks are supplied with Toggles



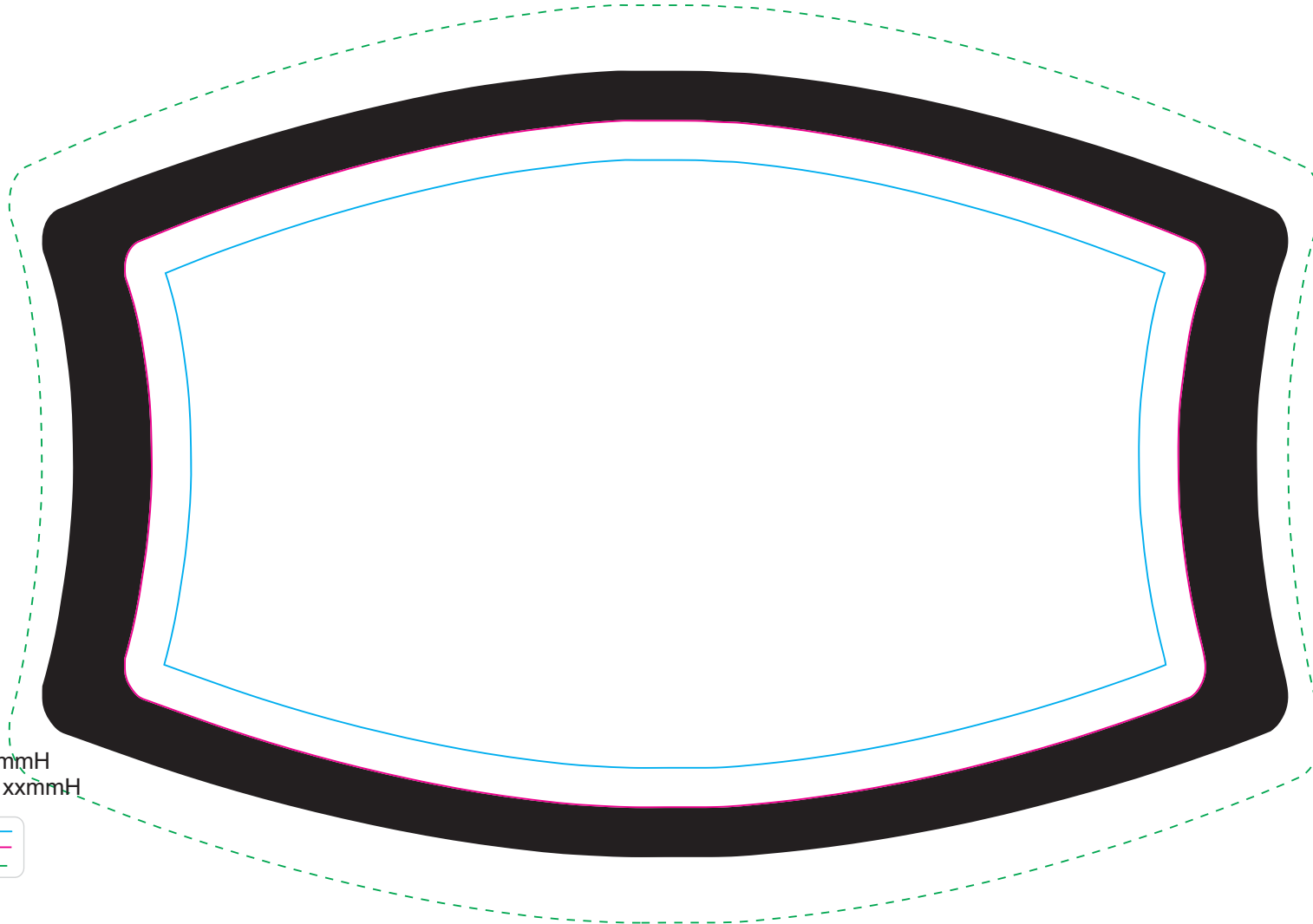
Print Area: 155mmL x 70mmH
Actual print size: xxmmL x xxmmH

Finished print area



LN8890 - Cotton Face Mask with toggles - Black/White or White

Sublimation 

Note these are not medical grade devices - Masks will vary in size design positioning can not be guaranteed.
Masks are supplied with Toggles



Print Area: 165mmL x 105mmH
Actual print size: xxmmL x xxmmH

Max print area for text and copy 
Finished print area 
Bleed 