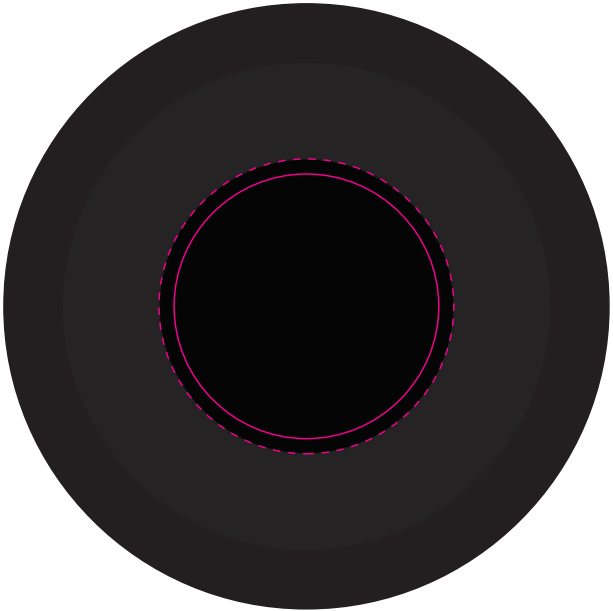
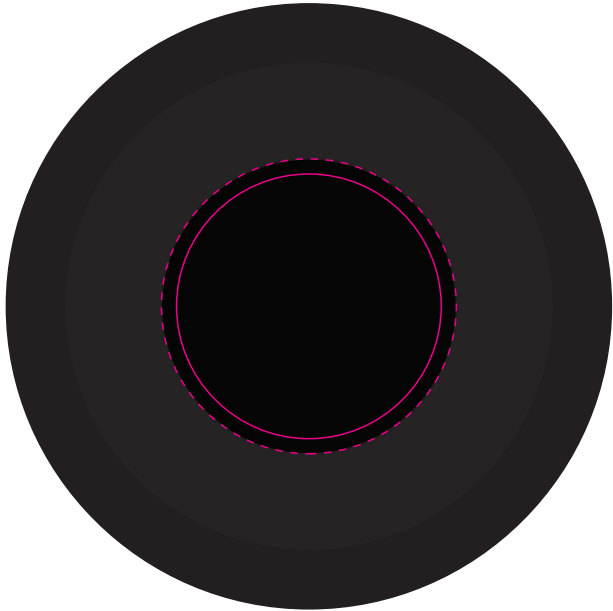


LL9469 - Neon Bluetooth Speaker - Black



Top Cap printed Or Bottom Cap Printed
Same design printed both Caps
Different designs printed on Top Cap and Bottom Cap



Speaker at 25% of size

*Front of Speaker
Design will be aligned to face
front of speaker*

Back of Speaker

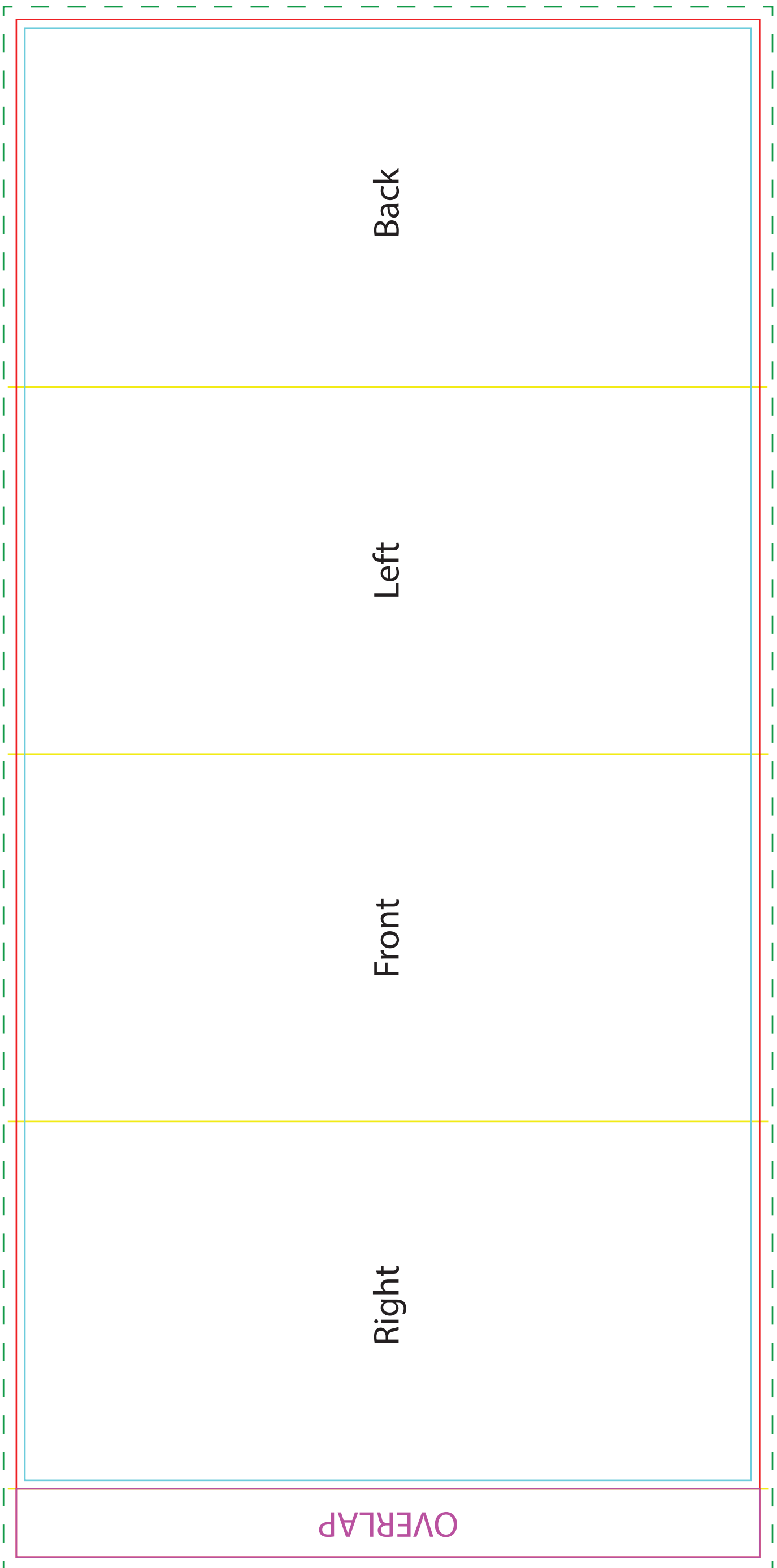


Bottom Cap

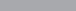
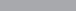
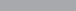
Digital - Full Coverage
Print Area: 39mm Diameter
Actual print size: xxmmL x xxmmH

Digital - Spot
Print Area: 35mm Diameter
Actual print size: xxmmL x xxmmH

Finished print area - Digital Full Coverage - - - -
Finished print area - Digital Spot Print - - - -



Sleeve
Print Area: 174mmL x 360mmH
Actual print size: mmL x mmH

Max print area for copy & text	
Finished print area	
Folds	
Bleed Requirement	