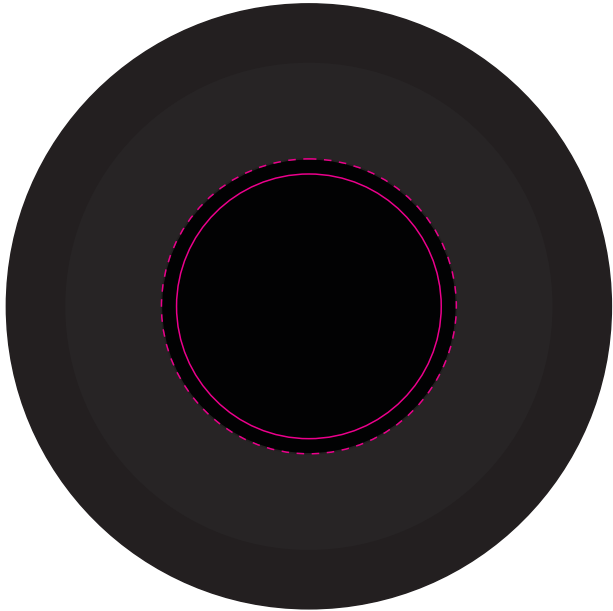


**LL9469 - Neon Bluetooth Speaker - Black**

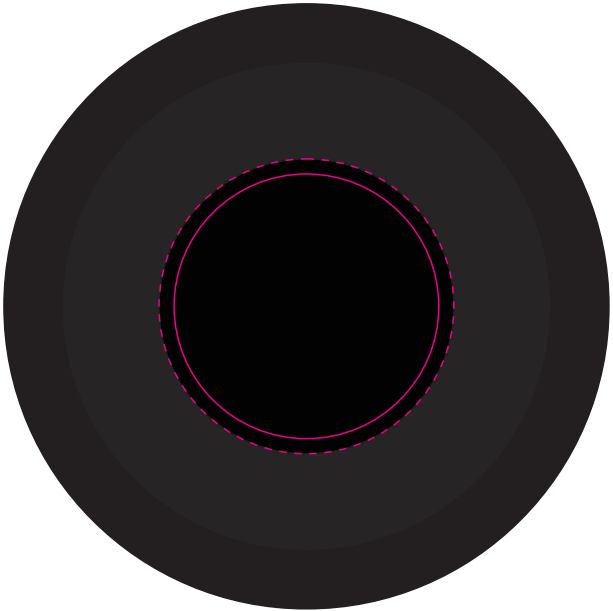


Top Cap printed Or Bottom Cap Printed  
Same design printed both Caps  
Different designs printed on Top Cap and Bottom Cap

Top Cap



Bottom Cap



Speaker at 25% of size

*Front of Speaker*  
Design will be aligned to face front of speaker

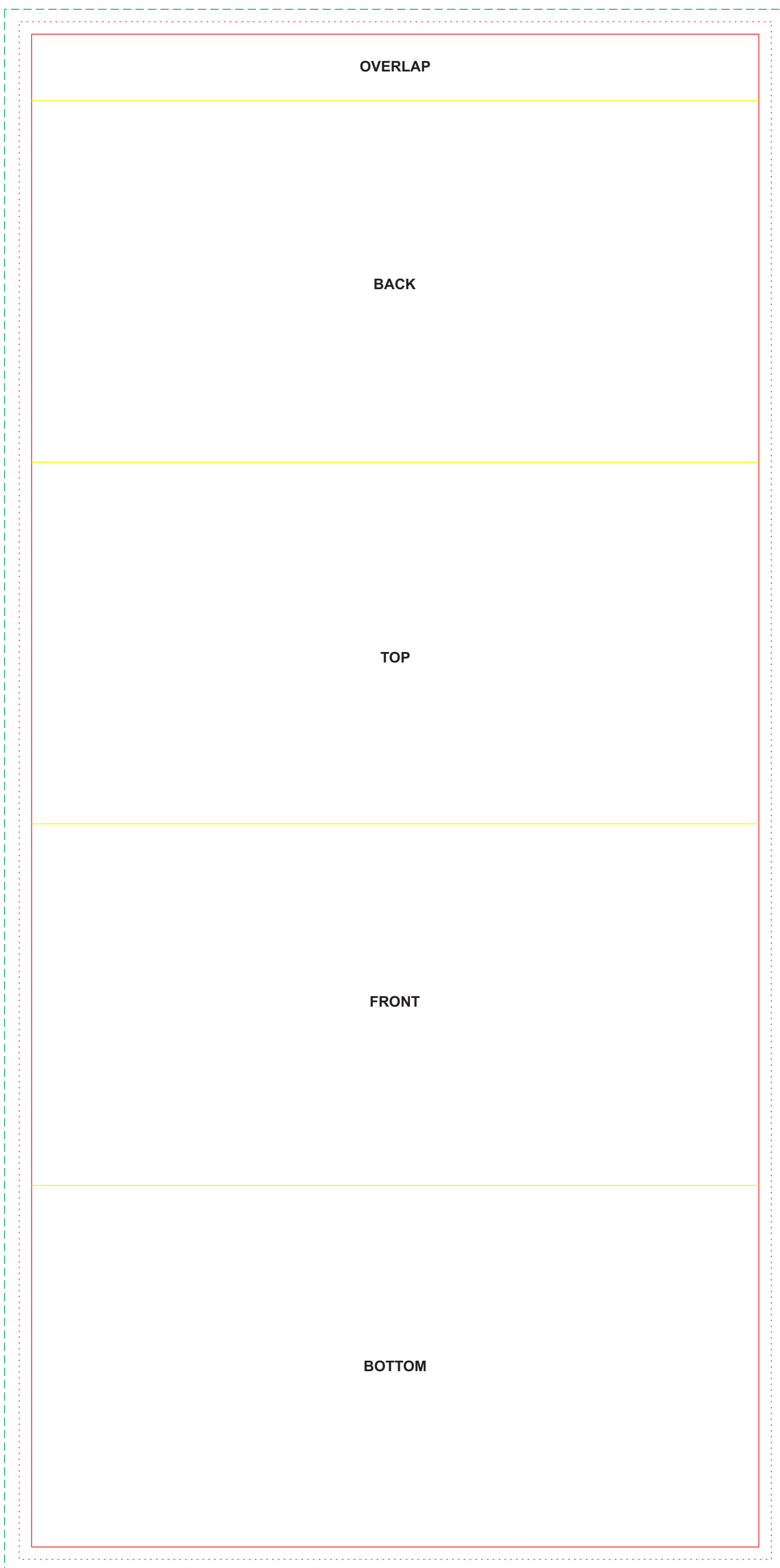
*Back of Speaker*



Bottom Cap

**Digital - Full Coverage**  
Print Area: 39mm Diameter  
Actual print size: xxmmL x xxmmH  
**Digital - Spot**  
Print Area: 35mm Diameter  
Actual print size: xxmmL x xxmmH

Finished print area - Digital Full Coverage - - - -  
Finished print area - Digital Spot Print - - - -



**Sleeve**

Print Area: 188mmL x 376mmH

Actual print size: mmL x mmH

Max print area for copy & text

Finished print area

Folds

Bleed Requirement

