

Logo Here

Job # XXXXXX  
Cust # XXXX-XC

LL9211 - Sabre Eco Wireless Power Bank - Natural

Pad Print



PMS  
XXXXC

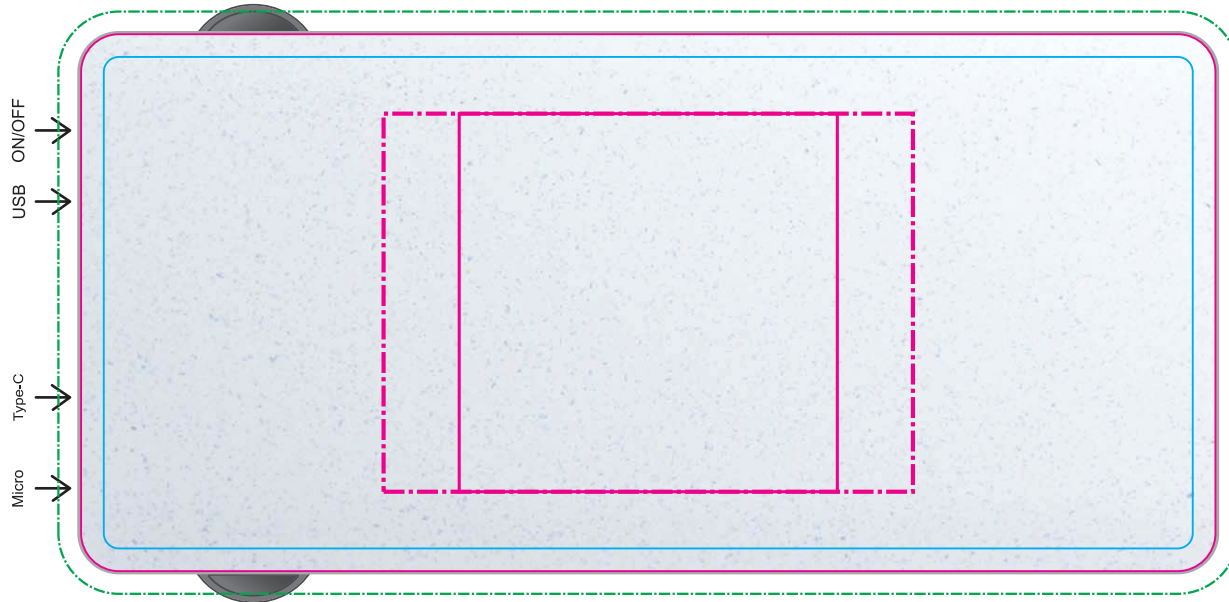
CMYK Direct Digital



Pad  
Print Area: 50mmL x 50mmH  
Actual print size: xxmmL x xxmmH

DIGITAL - Standard  
Print Area: 70mmL x 50mmH  
Actual print size: xxmmL x xxmmH


DIGITAL - Edge to Edge  
Print Area: 150mmL x 71mmH  
Actual print size: xxmmL x xxmmH





Max print area for copy & text  
Finished print area - Digital/Pad  
Bleed line



**LL9211 - Sabre Eco Wireless Power Bank with Label - Natural + Label**

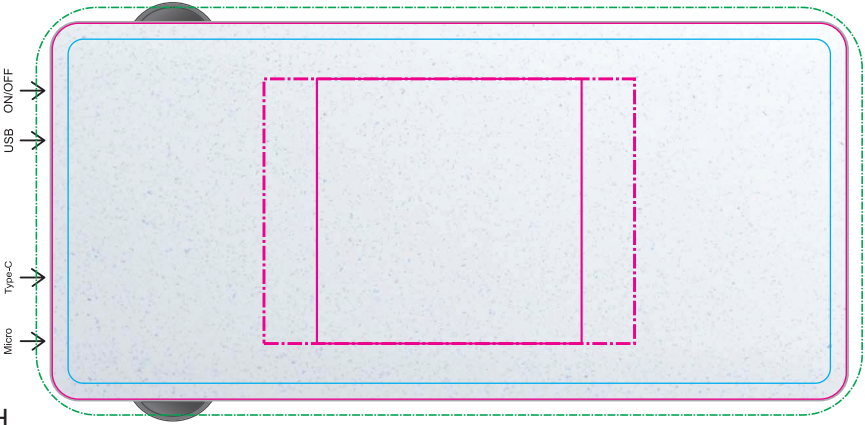
Pad Print  PMS XXXC

CMYK Direct Digital  C M Y K

CMYK Label  C M Y K



Showing at approx 70% of size



Pad  
Print Area: 50mmL x 50mmH  
Actual print size: xxmmL x xxmmH

DIGITAL - Standard  
Print Area: 70mmL x 50mmH  
Actual print size: xxmmL x xxmmH

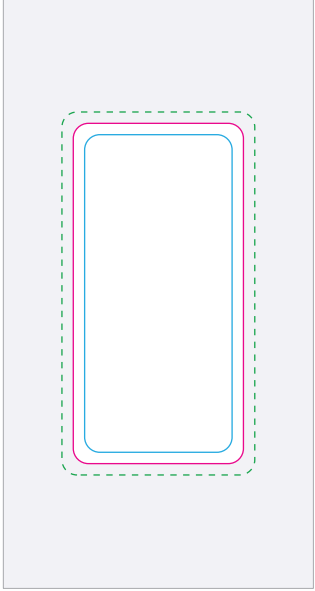
DIGITAL - Edge to Edge  
Print Area: 150mmL x 71mmH  
Actual print size: xxmmL x xxmmH

Max print area for copy & text 

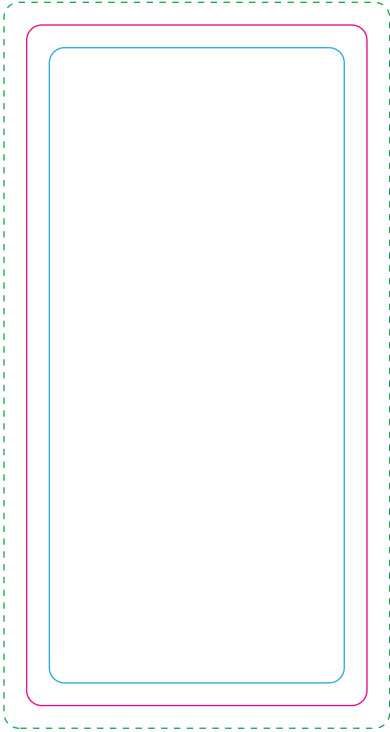
Finished print area - Digital/Pad 

Bleed line 


White gift box with Label  
50% of size





To size

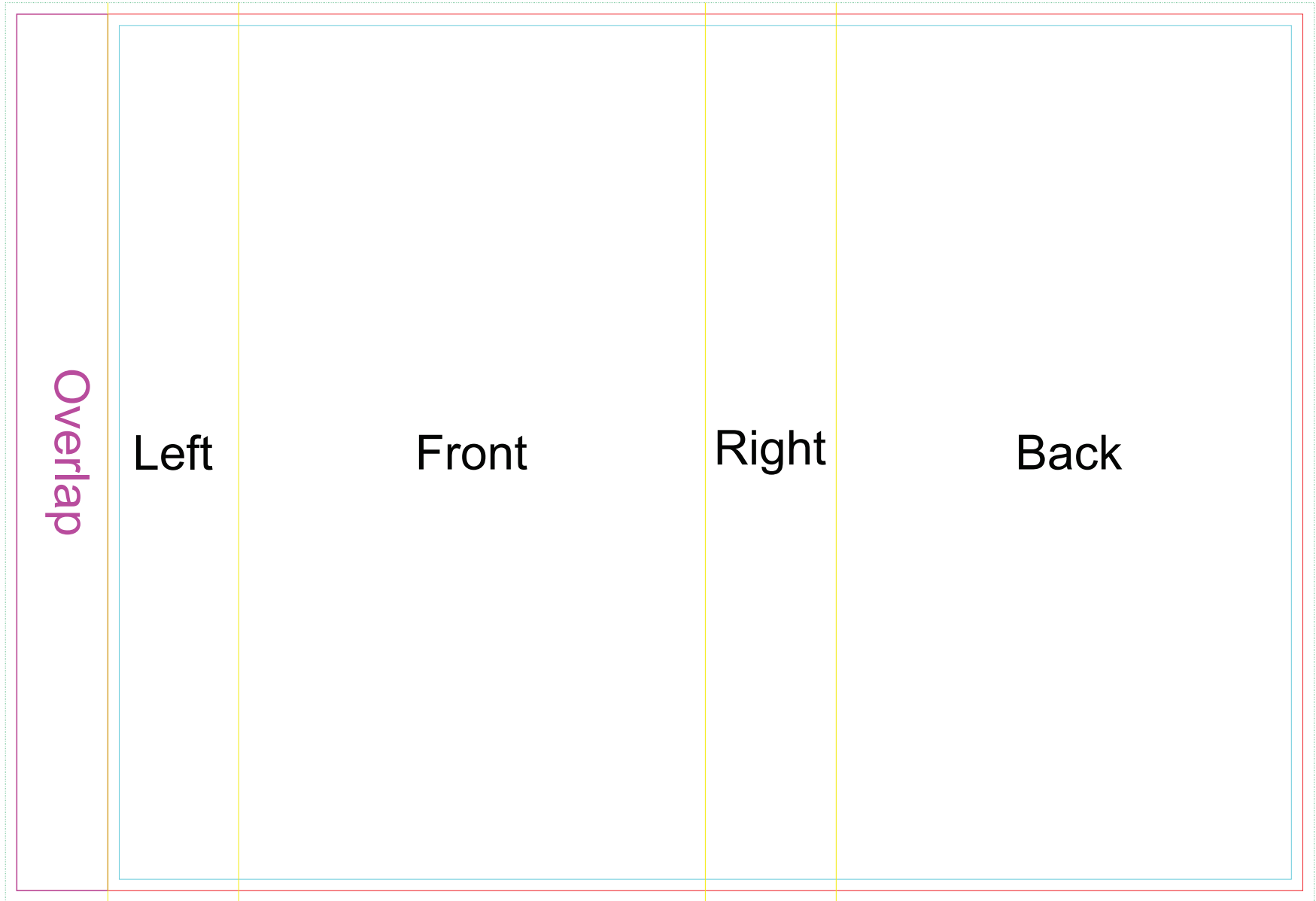


Label  
Print Area: 90mmL x 45mmH  
Actual print size: xxmmL x xxmmH

Max print area for copy & text 

Finished print area 

Label Bleed 



Sleeve

Print Area: 226mmL x 154mmH

Actual print size: xxmmL x xxmmH

Finished print area - Actual Size	— (Red line)
Finished print area - Text & Copy	— (Blue line)
Fold Lines	— (Yellow line)
Bleed Requirement	- - - (Dotted line)