


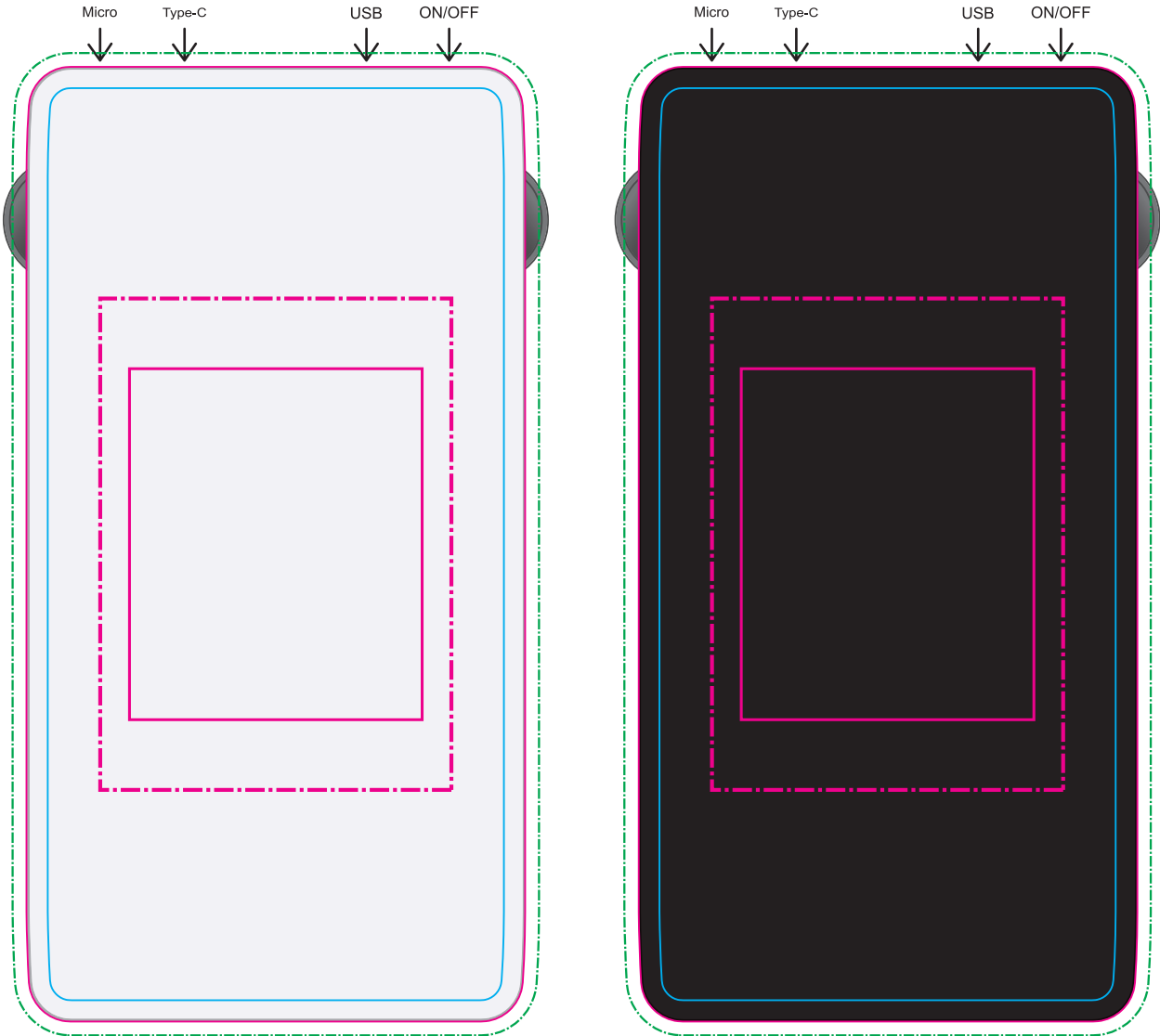


**LL9209 Sabre Wireless Power Bank - White or Black**



- Pad Print  PMS XXXc
- Screen Print  PMS XXXc
- CMYK Direct Digital 



**PAD**  
Print Area: 50mmL x 50mmH  
Actual print size: xxmmL x xxmmH

**SCREEN/DIGITAL - Standard**  
Print Area: 50mmL x 70mmH  
Actual print size: xxmmL x xxmmH

**DIGITAL - Edge to Edge**  
Print Area: 71mmL x 136mmH  
Actual print size: xxmmL x xxmmH

Max print area for copy & text   
 Finished print area - Digital/Screen/Pad   
 Bleed line 

Logo Here

Job # XXXXXX  
Cust # XXXX-XC

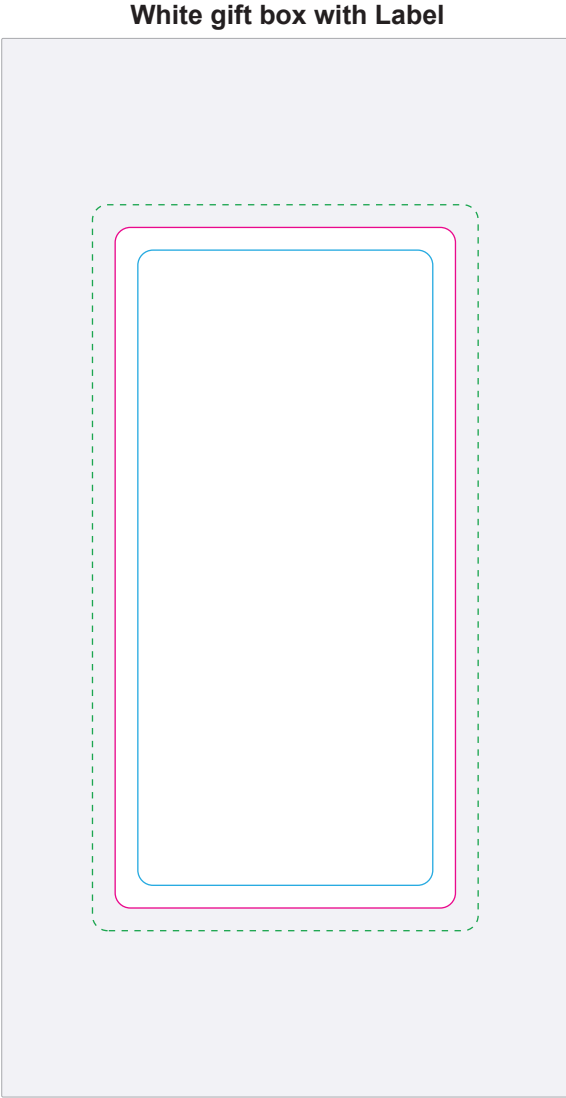
**LL9209 Sabre Wireless Power Bank with Label - White or Black**

Pad Print  PMS XXXC




Screen Print  PMS XXXC

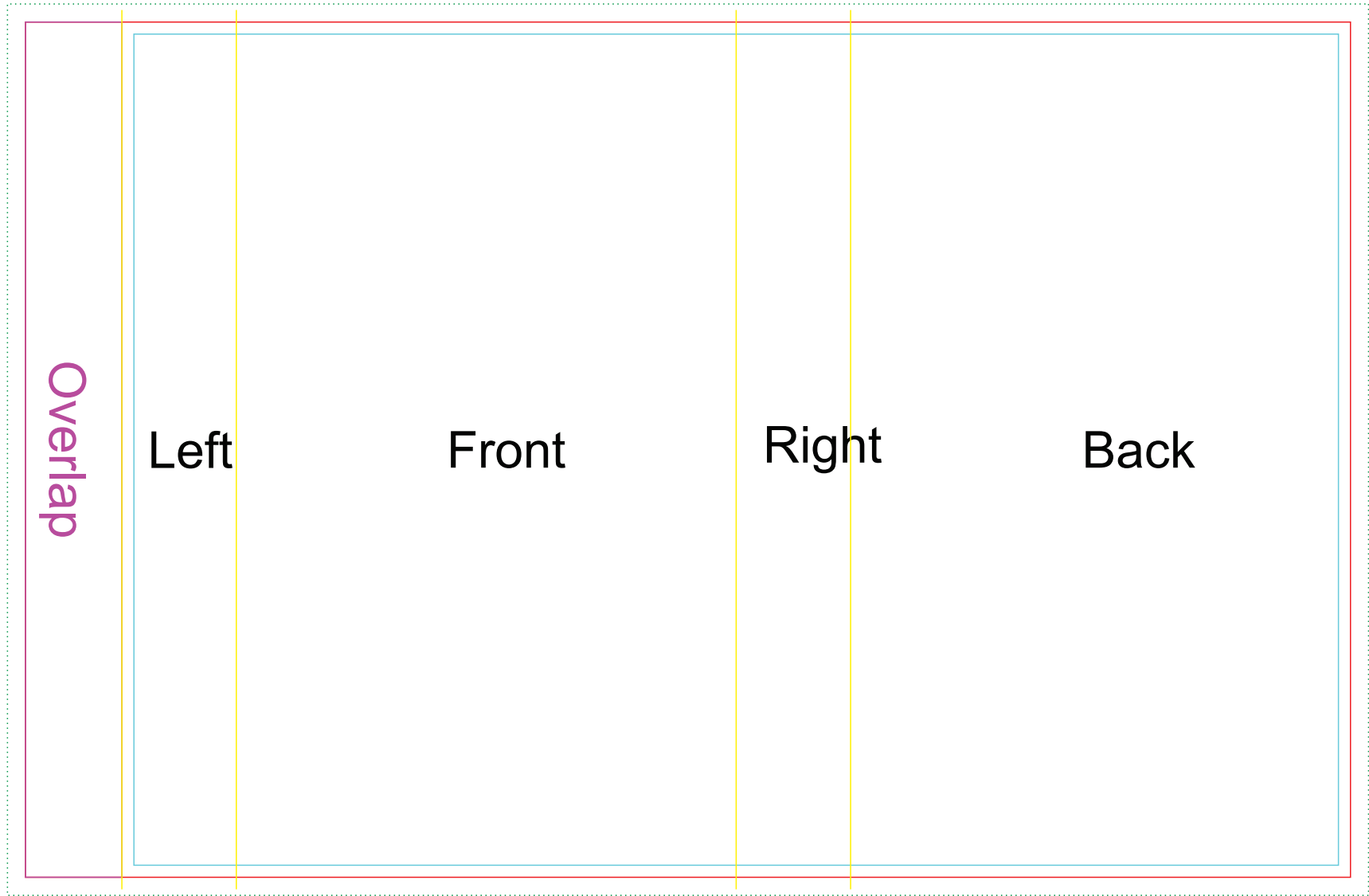
CMYK Direct Digital 

CMYK Label 






**Label**  
Print Area: 45mmL x 90mmH  
Actual print size: xxmmL x xxmmH

Max print area for copy & text   
Finished print area   
Label Bleed 



**Sleeve**  
Print Area: 220mmL x 142mmW  
Actual print size: xxmmL x xxmmW

Max print area for copy & text	
Finished print area	
Folds	
Bleed Requirement	