

Logo Here

Job # XXXXXX  
Cust # XXXX-XC


**LL7032 - Chic Cosmetic Pack - Felt Cosmetic Bag, Wheat Fibre Comb, Bamboo Nail File, Lip Balm: INSERT**

Screen Print  PMS XXXc

Nucolour Transfer  CMYK

Pad Print  PMS XXXc

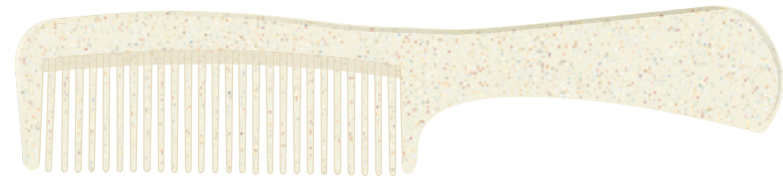
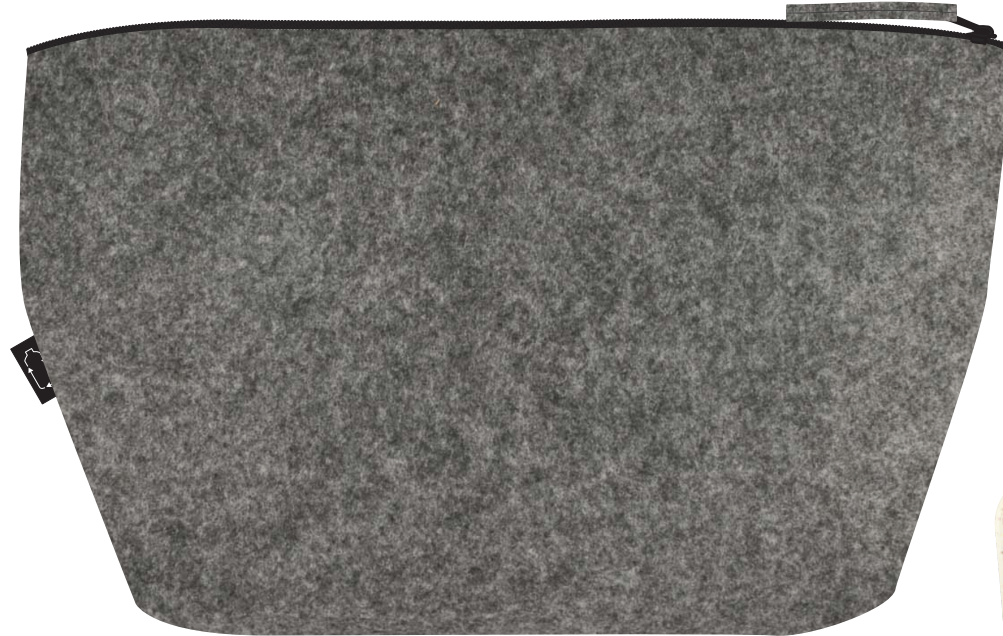
CMYK Direct Digital  CMYK


Laser Engrave  


**IMPORTANT**

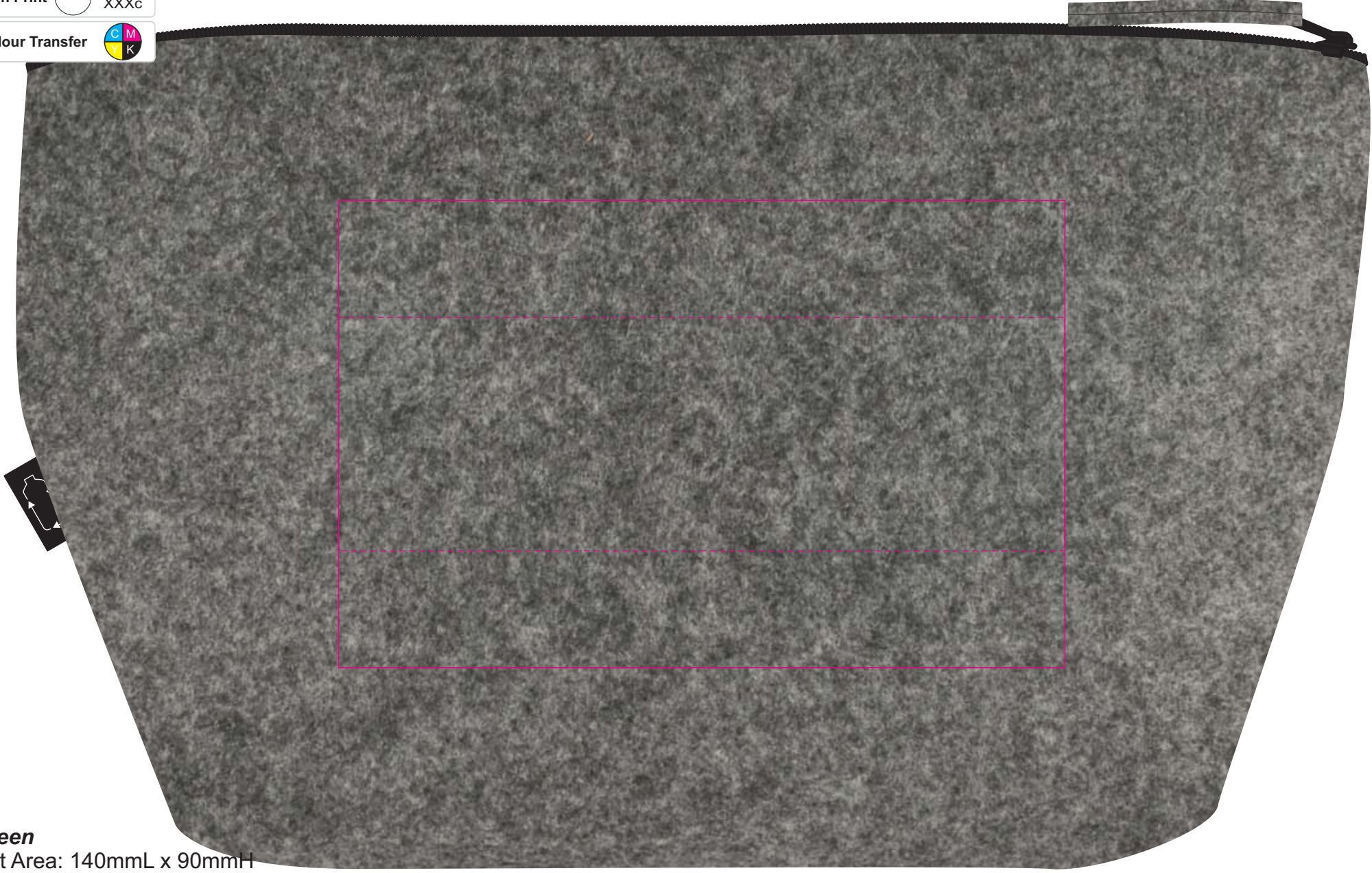
As bamboo is a natural material with irregular grain patterns & colour, variances will occur when laser engraving.

*Below is 50% of actual size*




Screen Print  PMS XXXc


Nucolour Transfer 



**Screen**  
Print Area: 140mmL x 90mmH  
Actual print size: xxmmL x xxmmH

**Digital Transfer**  
Print Area: 140mmL x 45mmH  
Actual print size: xxmmL x xxmmH

Finished print area - Screen 

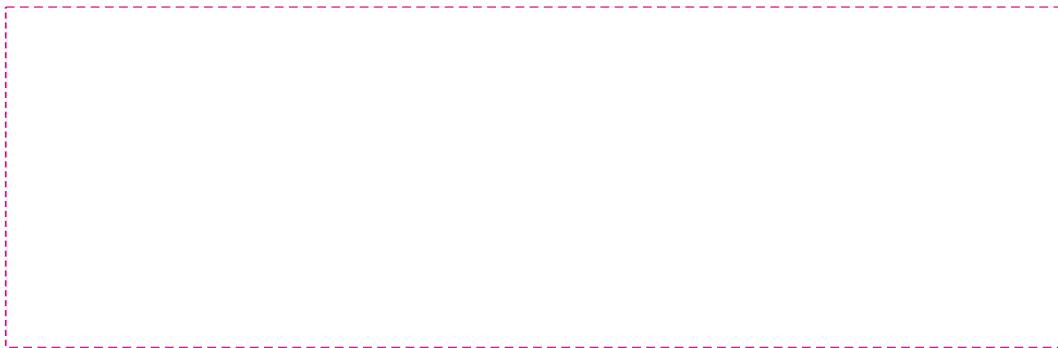
Finished print area - Transfer 

**IMPORTANT**  
Screen Print colours will be muted due to material.

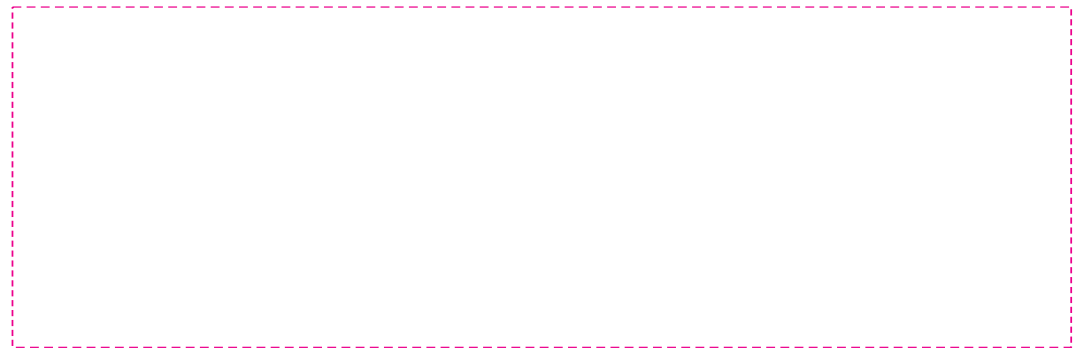
***Film (Screen)***



***Full Colour Design at 100% size.***

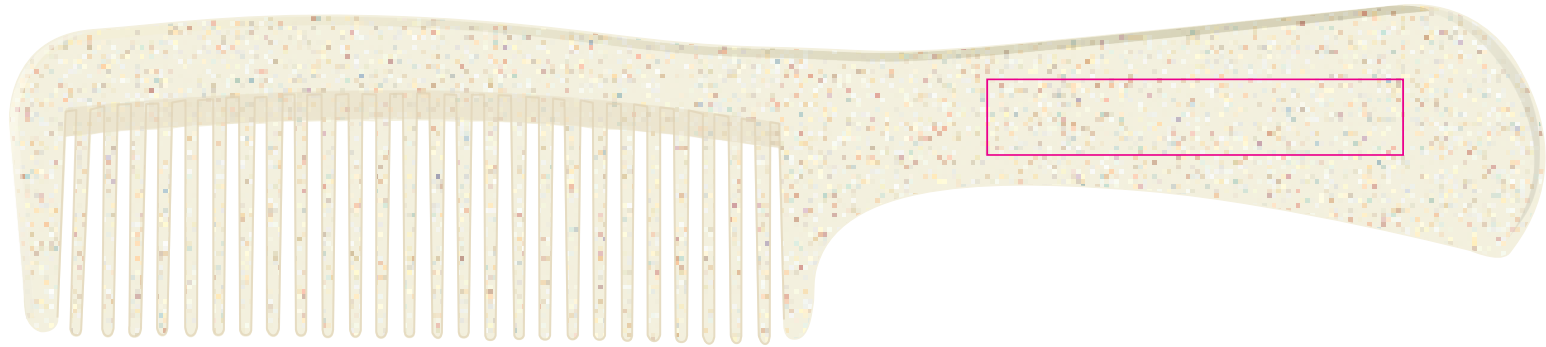


***White Layer.***



Pad Print PMS XXXc

CMYK Direct Digital



**Pad/Digital - Comb**

Print Area: 55mmL x 10mmH

Actual print size: xmmL x xmmH

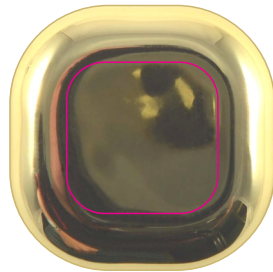
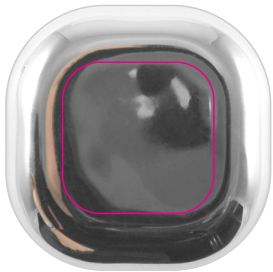
Finished print area

Pad Print PMS XXXc

Pad Print PMS XXXc

CMYK Direct Digital

Laser Engrave

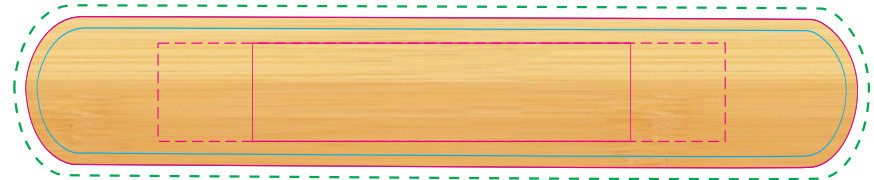


**Pad - Lip Balm**

Print Area: 20mmL x 20mmH

Actual print size: xmmL x xmmH

Finished print area



**Pad**

Print Area: 50mmL x 13mmH

Actual print size: xmmL x xmmH

**Digital - Nail File**

Print Area: 110mmL x 20mmH

Actual print size: xmmL x xmmH

**Laser - Nail File**

Print Area: 75mmL x 13mmH

Actual print size: xmmL x xmmH

Finished print area - Pad  
Finished print area - Laser  
Max print area for text & copy - Digital  
Finished print area - Digital  
Bleed line - Digital