

LI6960 - Mystique Stainless Steel Vacuum Bottle: Black/Black, Navy Blue/Black & White/Grey

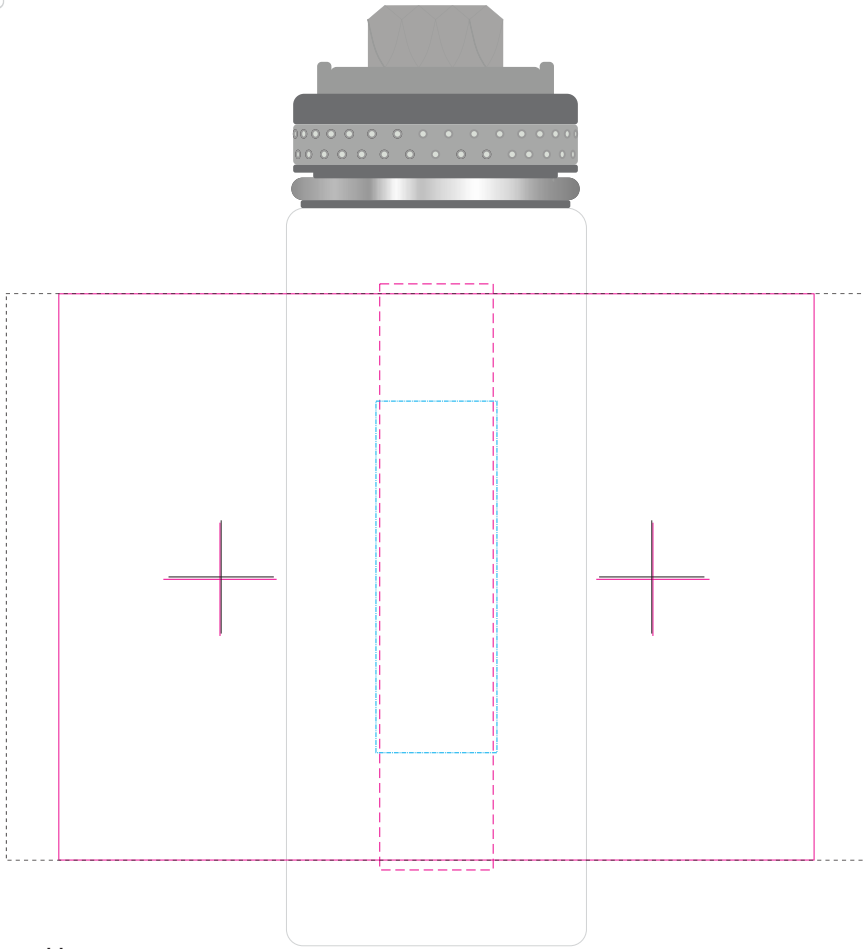
Roll Print  PMS XXXc

Laser Engraved - White Oxidisation

Direct Digital 

Rotary Digital 

BELOW IS 50% OF SIZE








Roll
Print Area: 200mmL x 150mmH
Actual print size: xxmmL x xxmmH

Digital
Print Area: 30mmL x 155mmH
Actual print size: xxmmL x xxmmH

Digital Rotary - Joined Wrap
Print area: 227.77mmL x 150mmH
Actual print size: xxmmL x xxmmH

Laser
Print Area: 32mmL x 90mmH
Actual print size: xxmmL x xxmmH

Finished print area - Roll/Screen	
Finished print area - Digital	
Finished print area - Digital Rotary	
Finished print area - Laser	
Approx opposite positions	

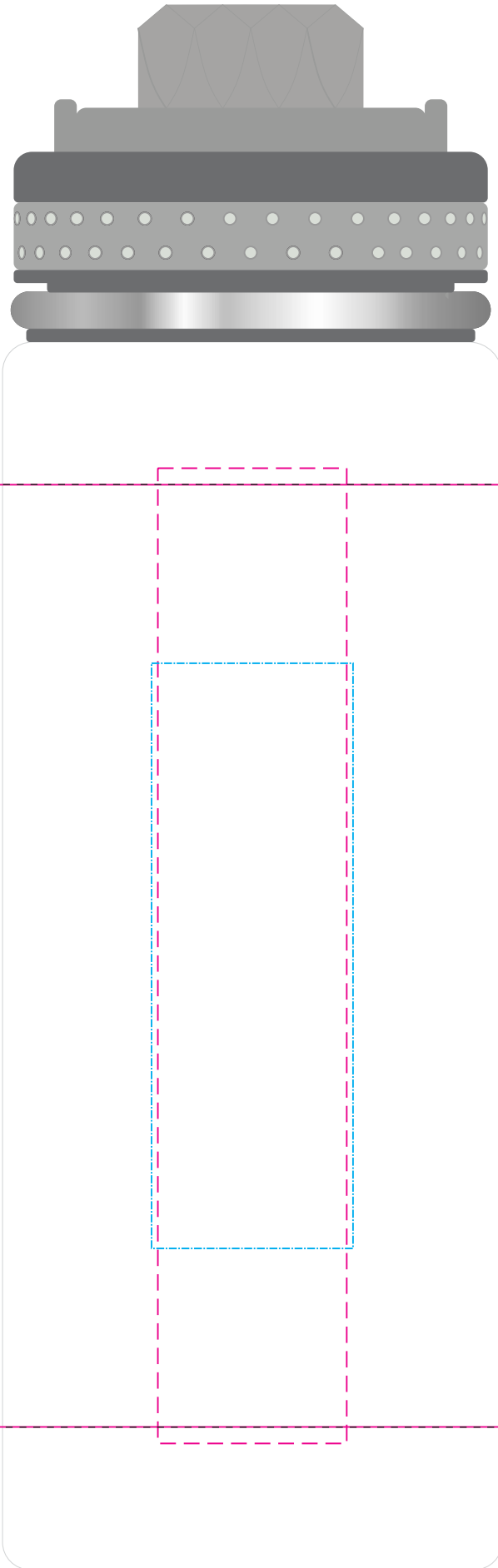


Roll Print 

Laser Engraved - White Oxidisation

Direct Digital 

Rotary Digital 



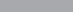
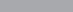



Roll
Print Area: 200mmL x 150mmH
Actual print size: xxmmL x xxmmH

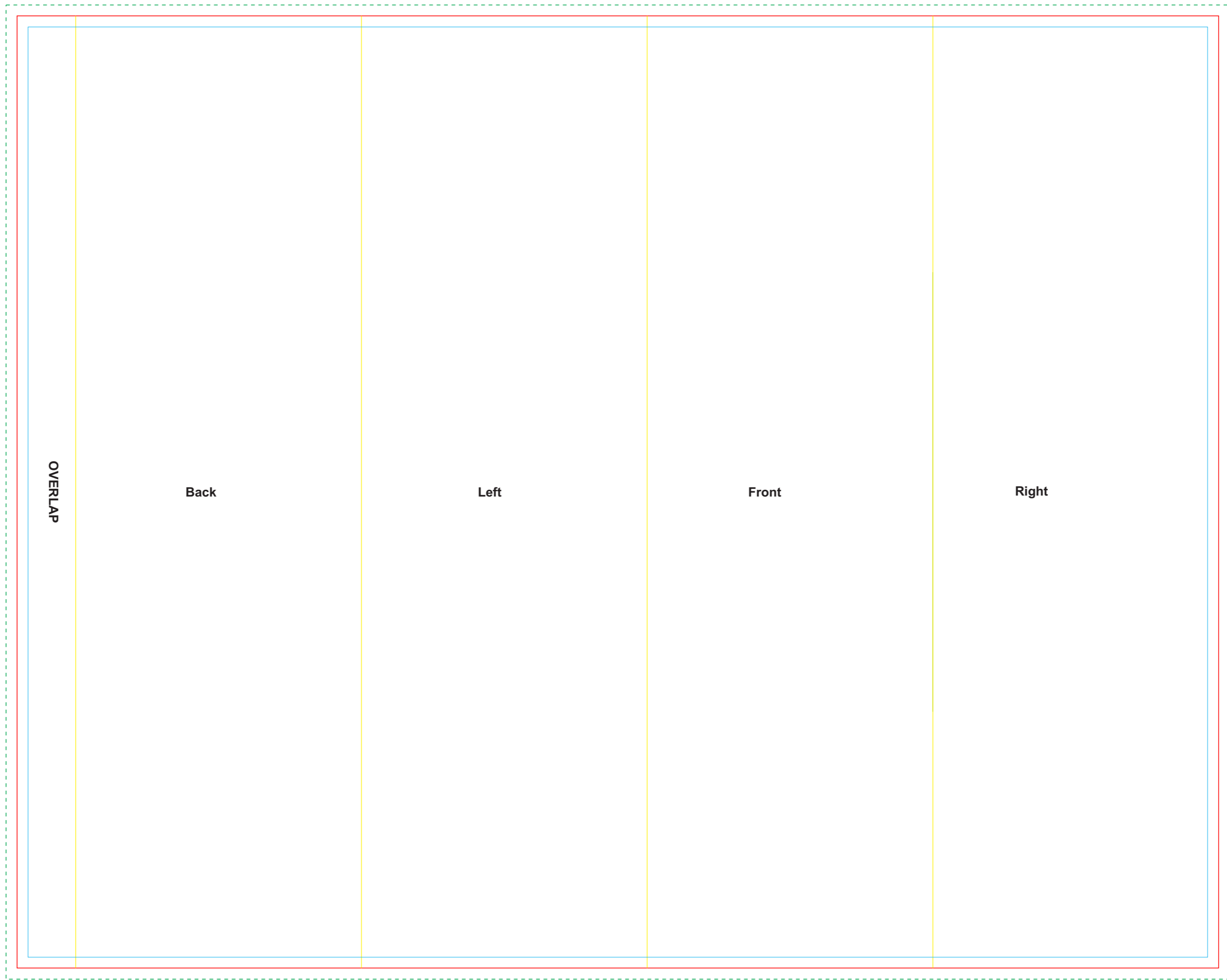
Digital
Print Area: 30mmL x 155mmH
Actual print size: xxmmL x xxmmH

Digital Rotary - Joined Wrap
Print area: 227.77mmL x 150mmH
Actual print size: xxmmL x xxmmH

Laser
Print Area: 32mmL x 90mmH
Actual print size: xxmmL x xxmmH

Finished print area - Roll/Screen 
Finished print area - Digital 
Finished print area - Digital Rotary 
Finished print area - Laser 
Approx opposite positions 





Back

Left

Front

Right

OVERLAP

Sleeve

Print Area: 328mmL x 260mmH

Actual print size: xxmmL x xxmmH

Finished print area - <i>Actual Size</i>	
Finished print area - <i>Text & Copy</i>	
Fold Lines	
Bleed Requirement	