


Logo Here

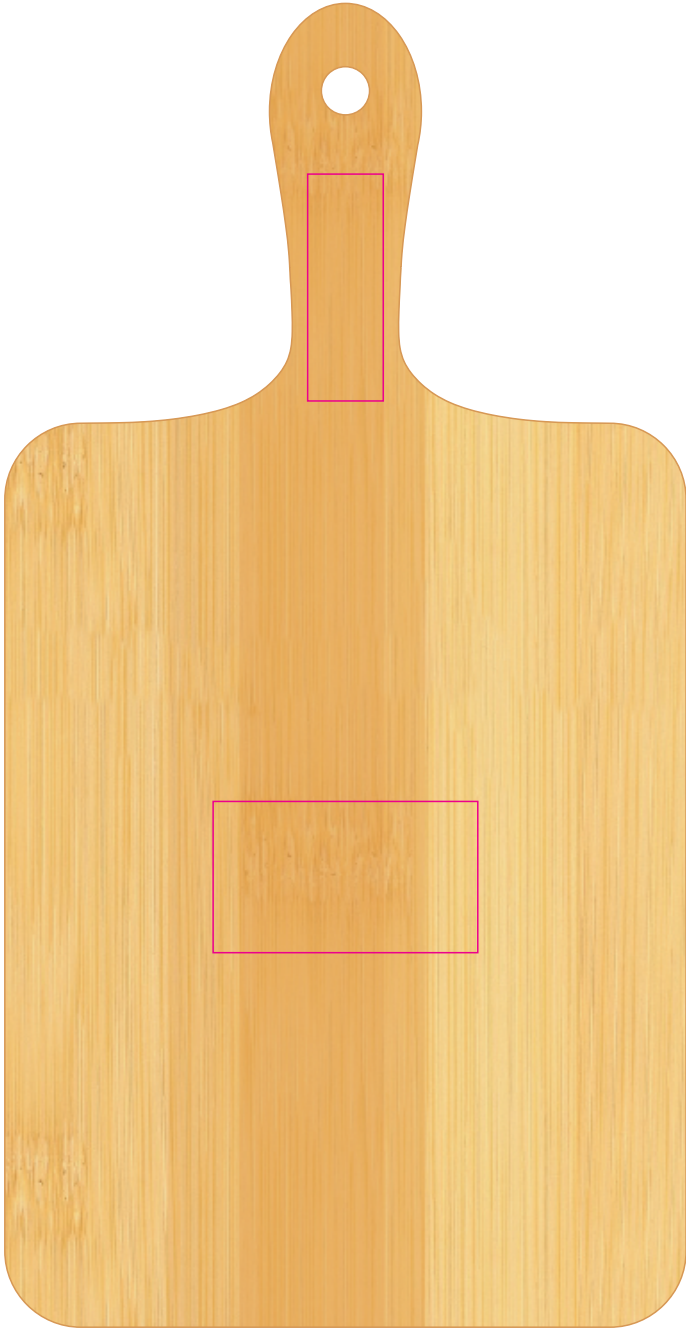
Job # XXXXXX
Cust # XXXX-XC

LL6716 - Solero Bamboo Serving Board - *Bamboo*

Laser Engrave 

IMPORTANT
As bamboo is a natural material with irregular grain patterns & colour, variances will occur when laser engraving.

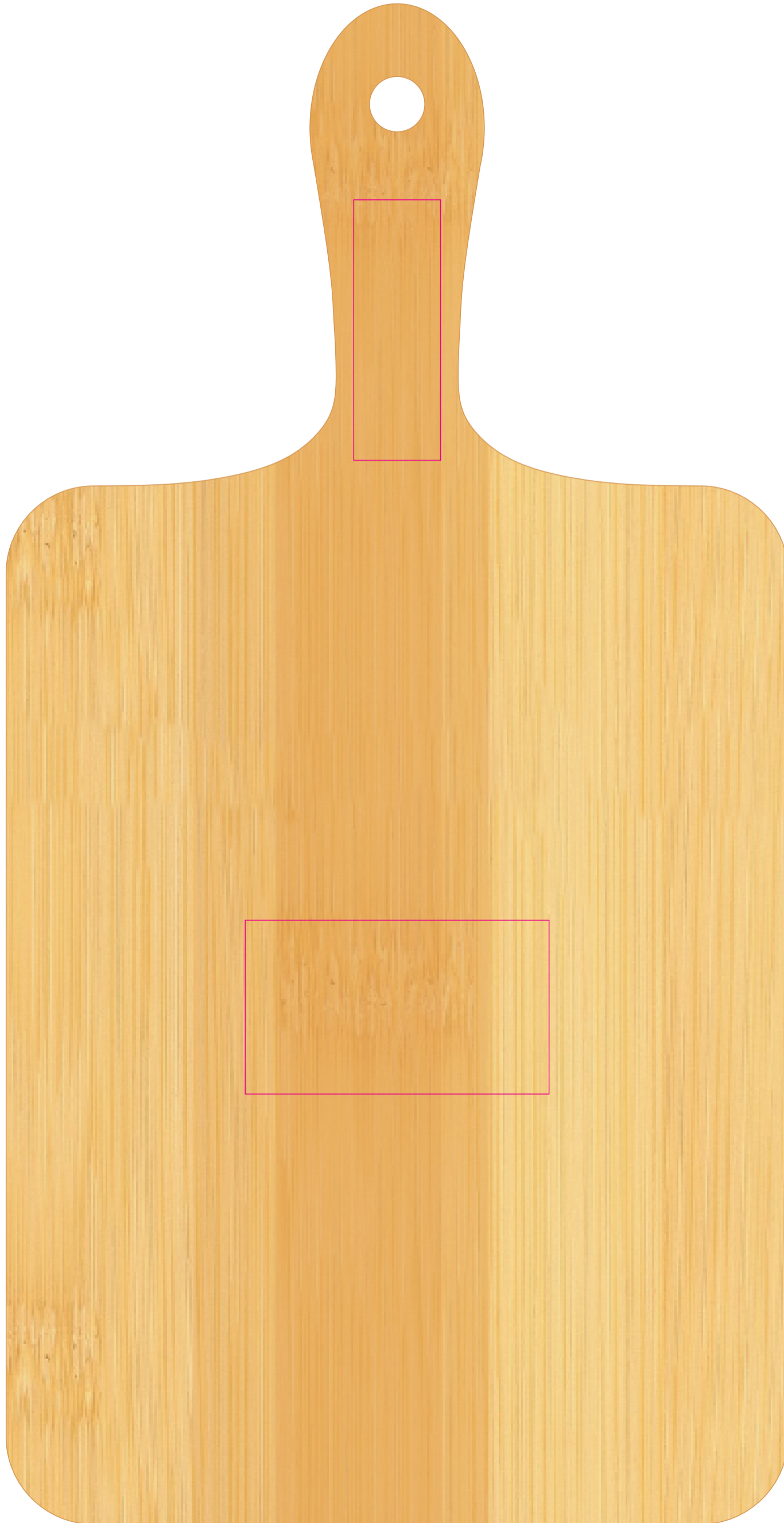
Below is 50% of actual size



Laser - Handle
Print area: 20mmL x 60mmH
Actual print size: xxmmL x xxmmH

Laser - Board
Print area: 70mmL x 40mmH
Actual print size: xxmmL x xxmmH

Laser Engrave



Laser - Handle

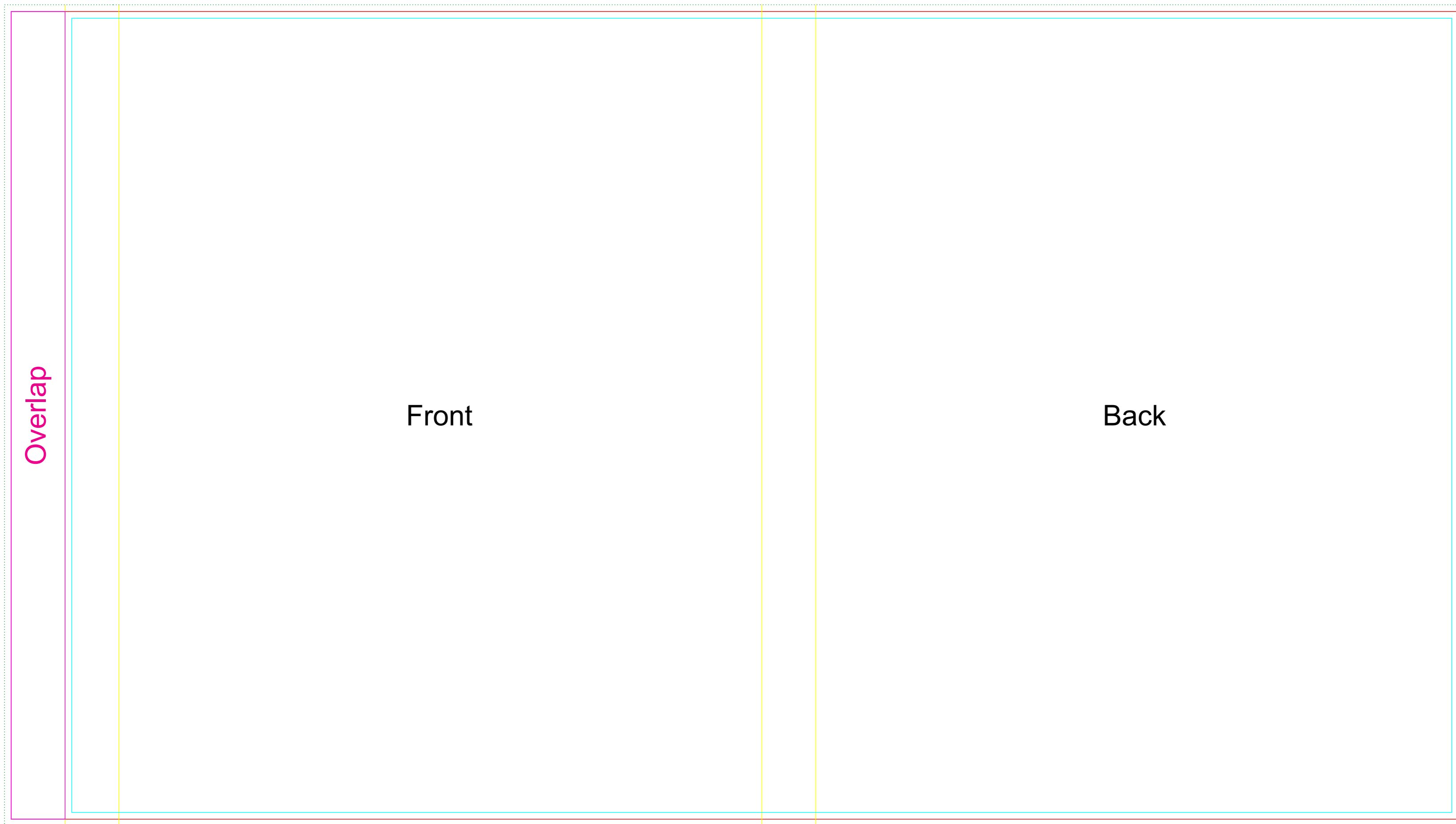
Print area: 20mmL x 60mmH

Actual print size: xxmmL x xxmmH

Laser - Board

Print area: 70mmL x 40mmH

Actual print size: xxmmL x xxmmH



Sleeve

Print Area: 430mmL x 240mmW

Actual print size: xxmmL x xxmmW

Max print area for copy & text	
Finished print area	
Folds	
Bleed Requirement	