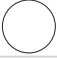



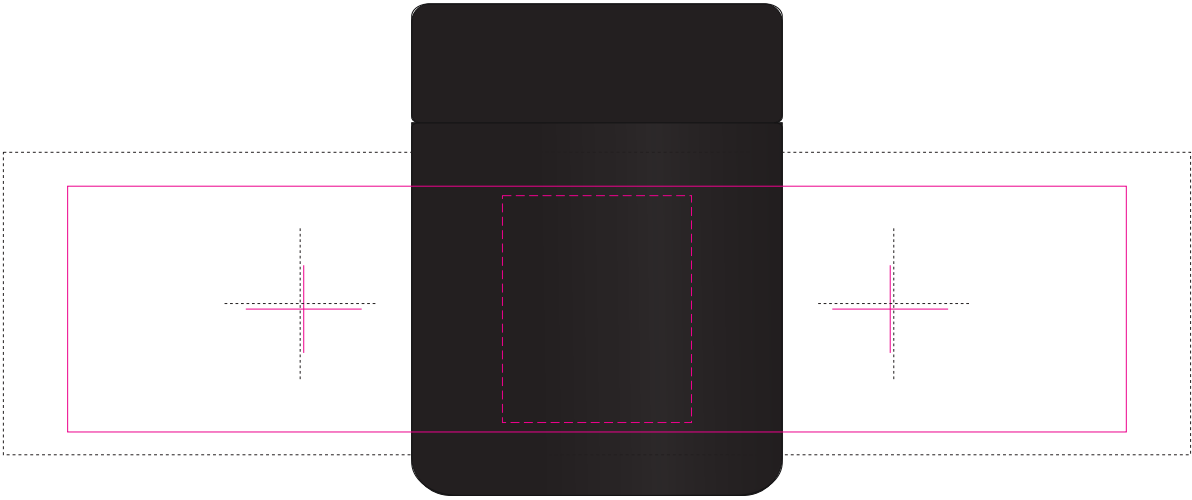



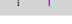


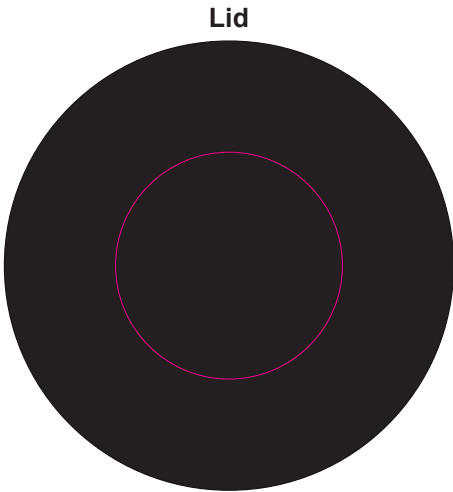
LL6373- Deliver Food Container - Matte Black, Gloss White

- Rotary Screen  PMS XXXc
- Laser Engraved
- Direct Digital 
- Rotary Digital 
- Pad Print  PMS XXXc

Below showing at 50%



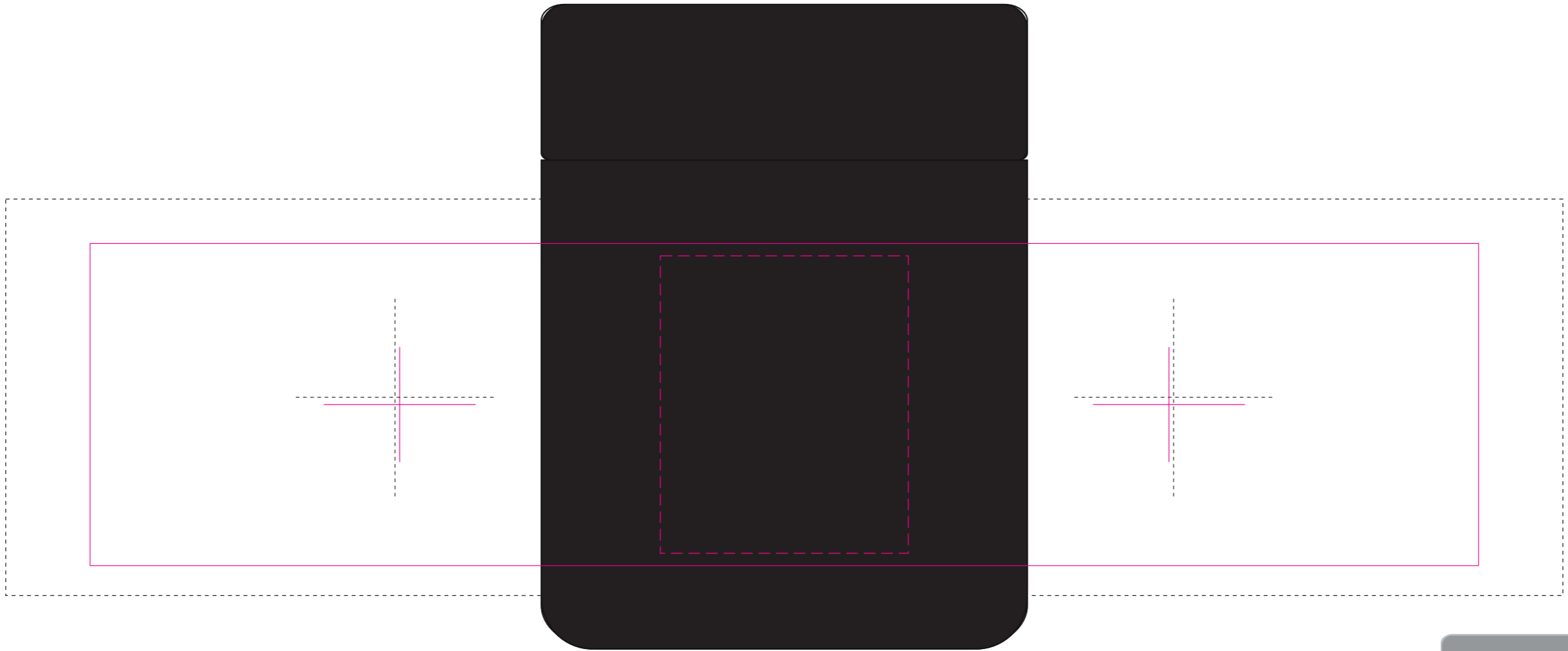
- Digital Rotary - Joined Wrap**
Print Area: 314mmL x 80mmH
Actual print size: xxmmL x xxmmH
 - Laser**
Print Area: 50mmL x 60mmH
Actual print size: xxmmL x xxmmH
 - Rotary Screen**
Print Area: 280mmL x 65mmH
Actual print size: xxmmL x xxmmH
- | | |
|--------------------------------------|---|
| Finished print area - Roll/Screen |  |
| Finished print area - Laser |  |
| Finished print area - Digital Rotary |  |
| Approx Opposite Positions |  |



- Pad on Lid**
Print Area: 50mm Diameter
Actual print size: xxmmL x xxmmH
 - Digital on Lid**
Print Area: 50mm Diameter
Actual print size: xxmmL x xxmmH
- | | |
|-----------------------------------|---|
| Finished print area - Pad/Digital |  |
|-----------------------------------|---|

Laser Engraved

Rotary Digital




Digital Rotary - *Joined Wrap*
 Print Area: 314mmL x 80mmH
 Actual print size: xxmmL x xxmmH


Laser
 Print Area: 50mmL x 60mmH
 Actual print size: xxmmL x xxmmH

Rotary Screen
 Print Area: 280mmL x 65mmH
 Actual print size: xxmmL x xxmmH

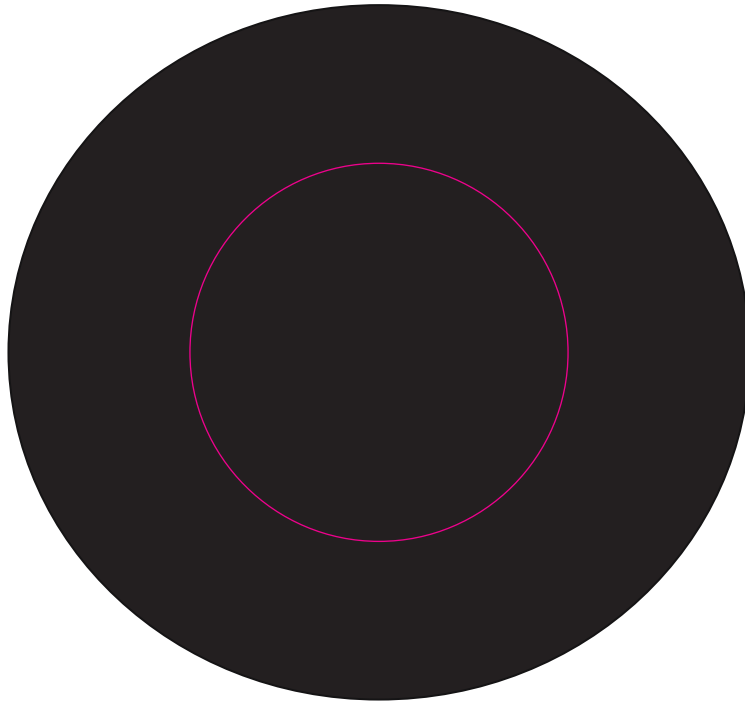
Finished print area - Roll/Screen	
Finished print area - Laser	
Finished print area - Digital Rotary	
Approx Opposite Positions	



Pad Print  PMS
XXXc

Direct Digital 

Lid



Pad on Lid

Print Area: 50mm Diameter

Actual print size: xxmmL x xxmmH

Digital on Lid

Print Area: 50mm Diameter

Actual print size: xxmmL x xxmmH

Finished print area - *Pad/Digital* 

