

LL6022 - 5 Pack Shield Face Masks with Toggles - *Face Mask*: Black/White + Toggles

Screen Print



Sublimation



Digital



Note these are not medical grade devices - squeeze tight nose clip located at top of mask

Special icons if required

APPROX 60% OF SIZE

APPROX 40% OF SIZE

Label applied to back of polybag

REUSABLE FACE MASK: NOT MEDICAL

Item Code: LL6022

Material: 11 Layer, Latex Free, Spunlace 100%

Filter: Non-activated Carbon Filter

Can be used safely: Wash before use and wash after each use

Do not stir/drop and do not touch: - during use (not recommended)

1. Place ear loops securely around ears.

2. Place mask over nose and mouth and compress moldable for a tight fit.

3. Adjust mask to fit your face. Made in China

Face Mask with toggles



INTERNAL USE ONLY

INT: _____ Rpt SO: _____ Rpt Pte: _____ New Pte: _____ QC: _____ Q: _____ S: _____ E: _____ R: _____ PHOTO Int: _____

Prep: _____ Prt Int: _____ Info: _____ U/P Int: _____ R/P Int: _____ FS STK: _____

Ctns: _____ Wt(kgs): _____ D: _____ Ctns: _____ Wt(kgs): _____ D: _____ Total Ctns: _____ Total wt (kgs) _____

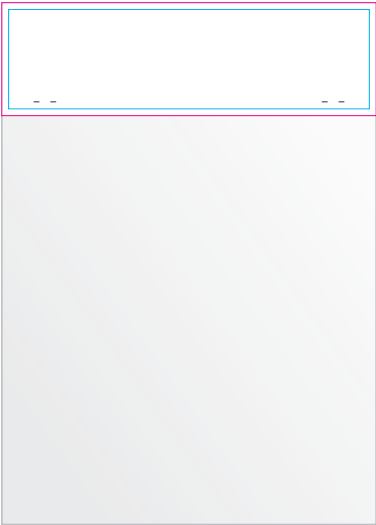
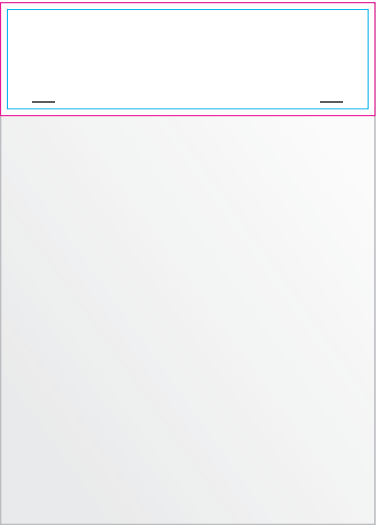
Digital



BELOW IS APPROX 30% OF SIZE

Side 1

Side 2



Bag Header - Side 1

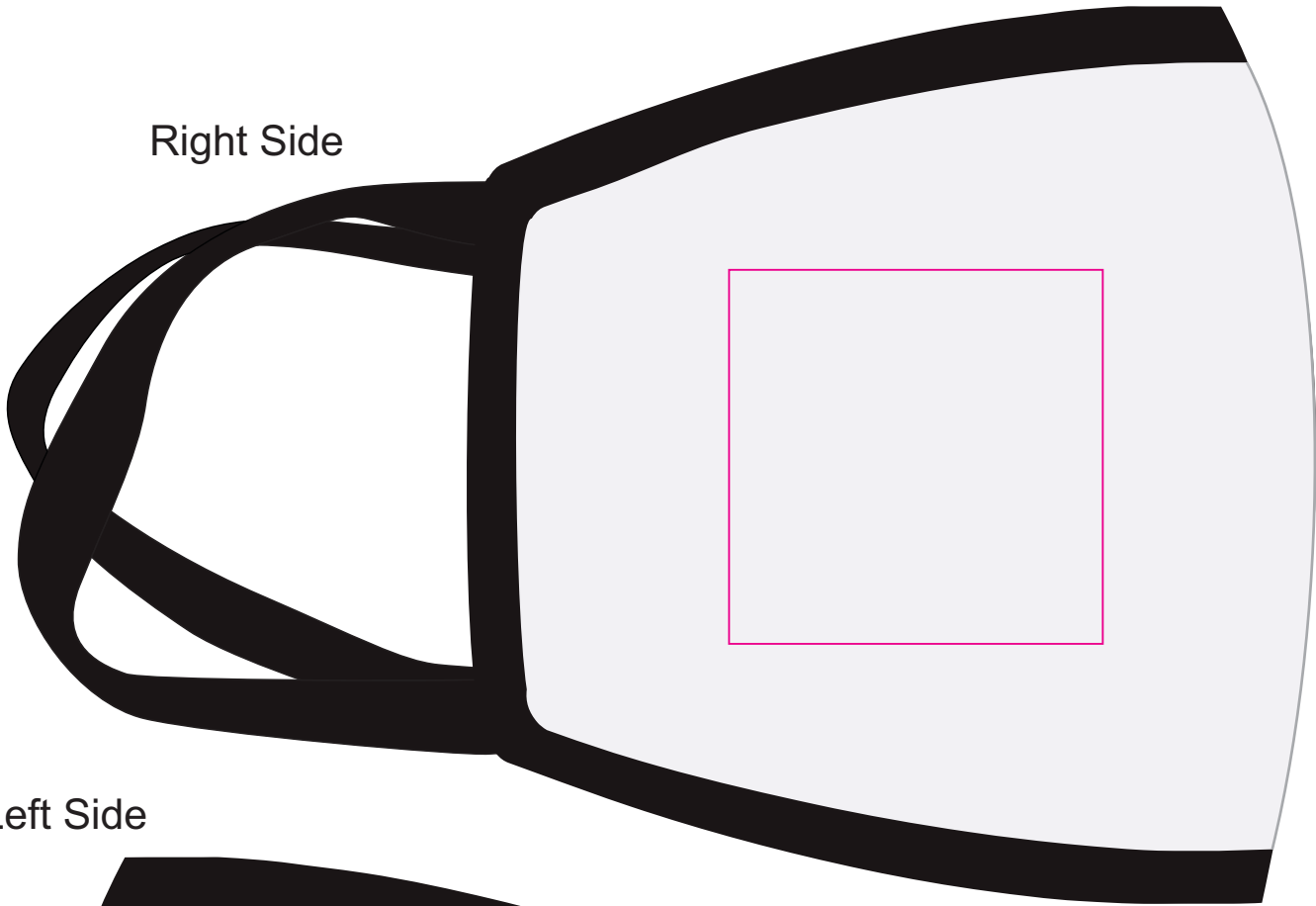
Print Area: 165mmL x 100mmH
Actual print size: xmmL x xmmH

Bag Header - Side 2

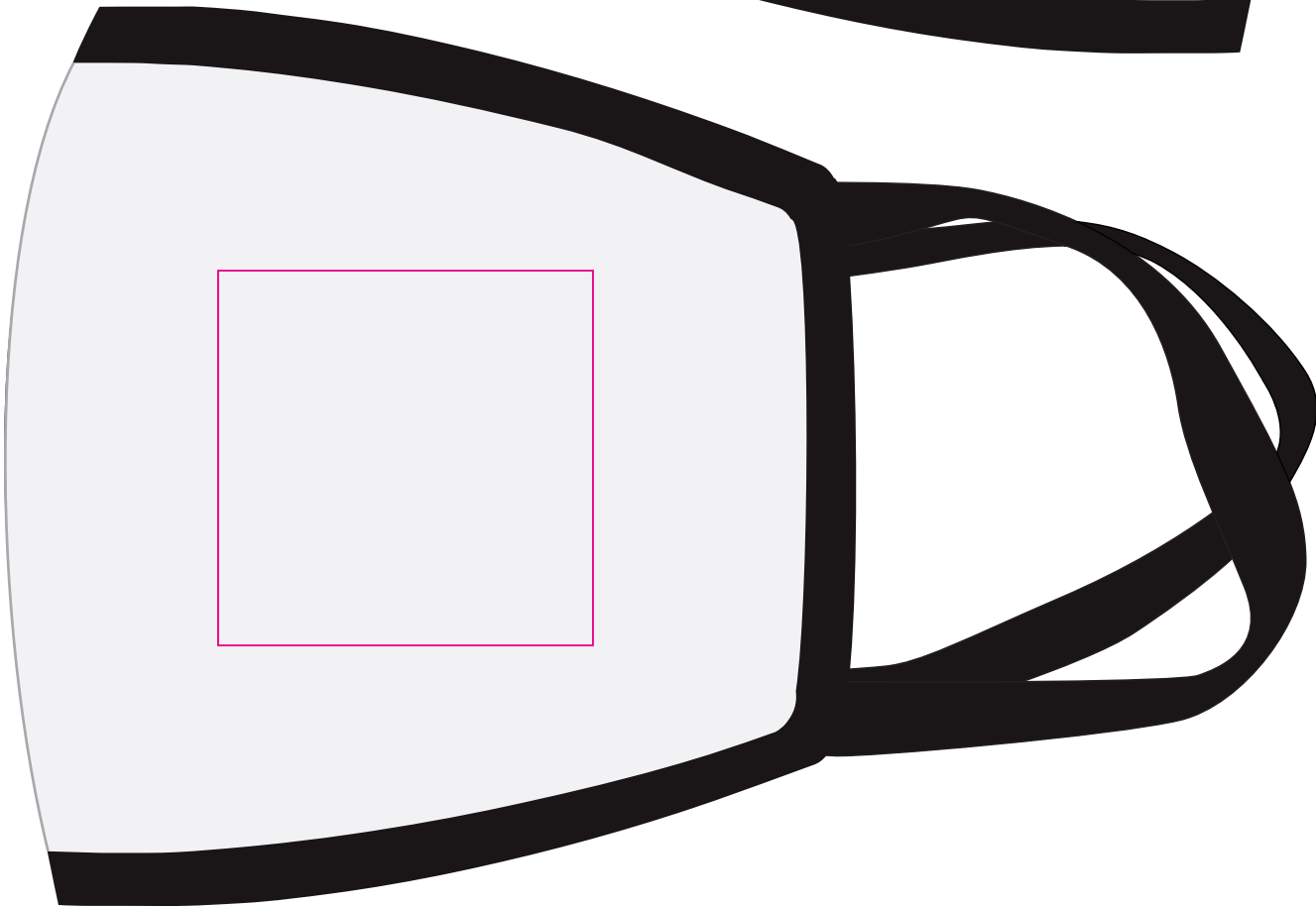
Print Area: 165mmL x 100mmH
Actual print size: xmmL x xmmH

Max print area for copy & text
Finished print area
Score/fold

Right Side



Left Side

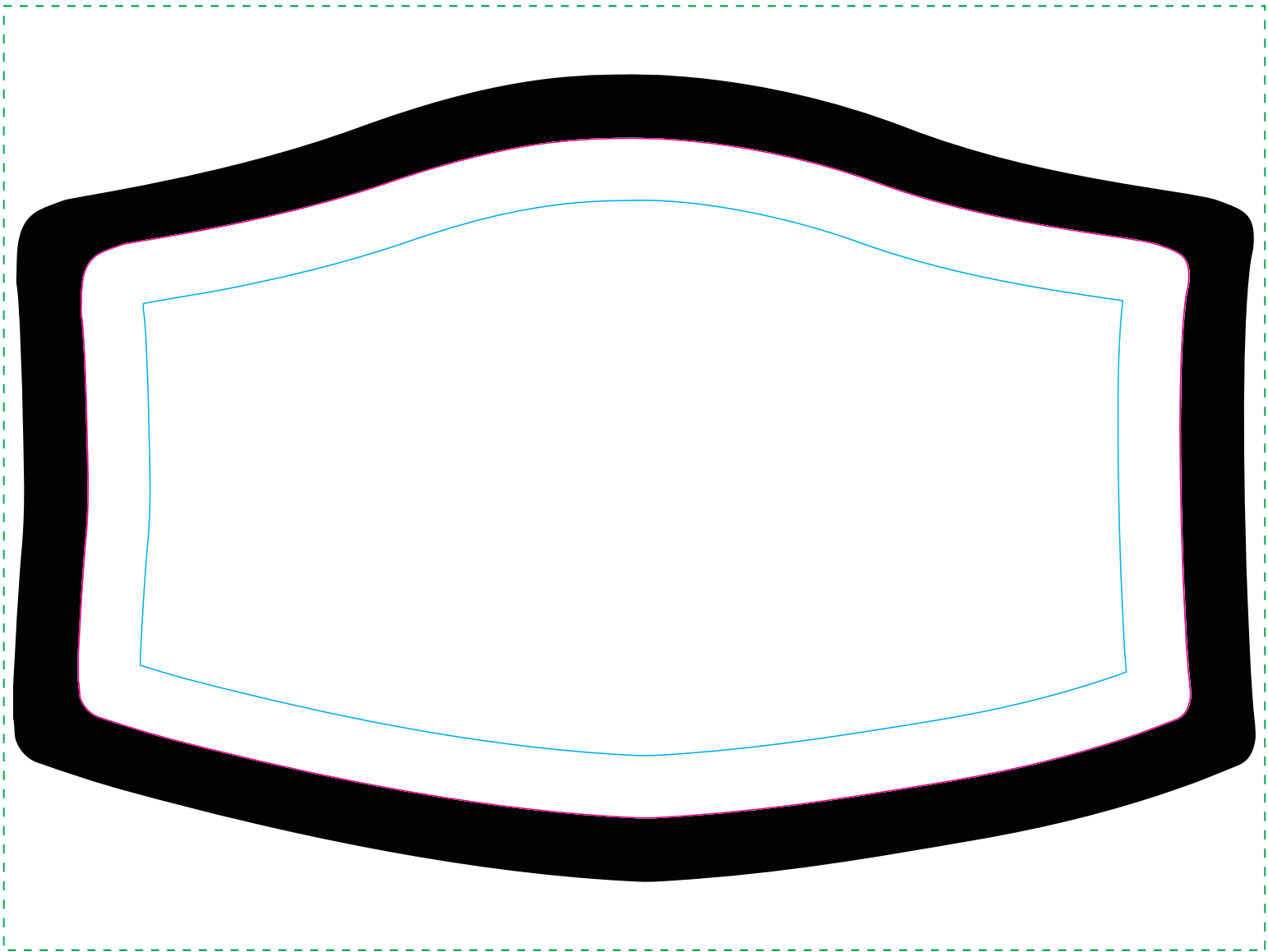


Screen
Print Area: 50mmL x 50mmH
Actual print size: xxmmL x xxmmH

Finished print area



Note these are not medical grade devices - squeeze tight nose clip located at top of mask
Masks will vary in size design positioning can not be guaranteed



Print Area: 180mmL x 110mmH
Actual print size: xxmmL x xxmmH

Max print area for text and copy
Finished print area
Bleed



Face Mask with toggles

