

Logo Here

Job # XXXXXX
Cust # XXXX-XC

LL5524 - Long Handle Cotton bag with Colouring Pencils - Long Handle Bag: INSERT Pencils: Natural/Assorted

Screen Print PMS XXXc

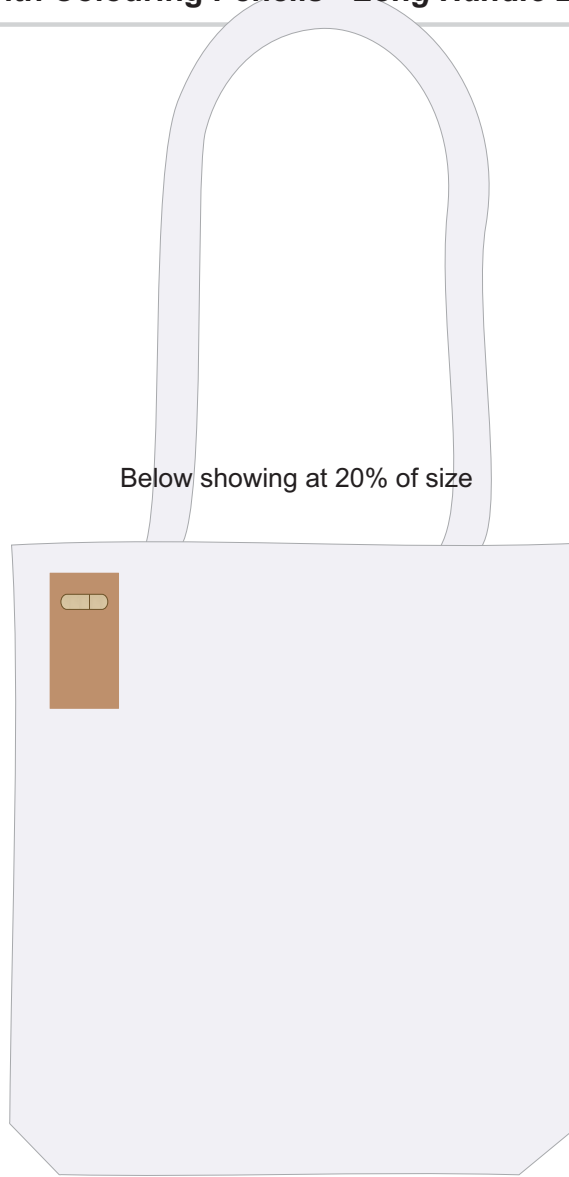
Nucolour Transfer 

Pad Print PMS XXXc

CMYK Label 

CMYK Direct Digital 

Below showing at 20% of size



Bags - Screen Print

Print area: 250mmL x 320mmH
Actual print size: xxmmL x xxmmH

Bags - Nucolour

Print area: 210mmL x 297mmH
Actual print size: xxmmL x xxmmH

Crayons - Pad/Digital

Print Area: 35mmL x 35mmH
Actual print size: xxmmL x xxmmH

Crayons - Label

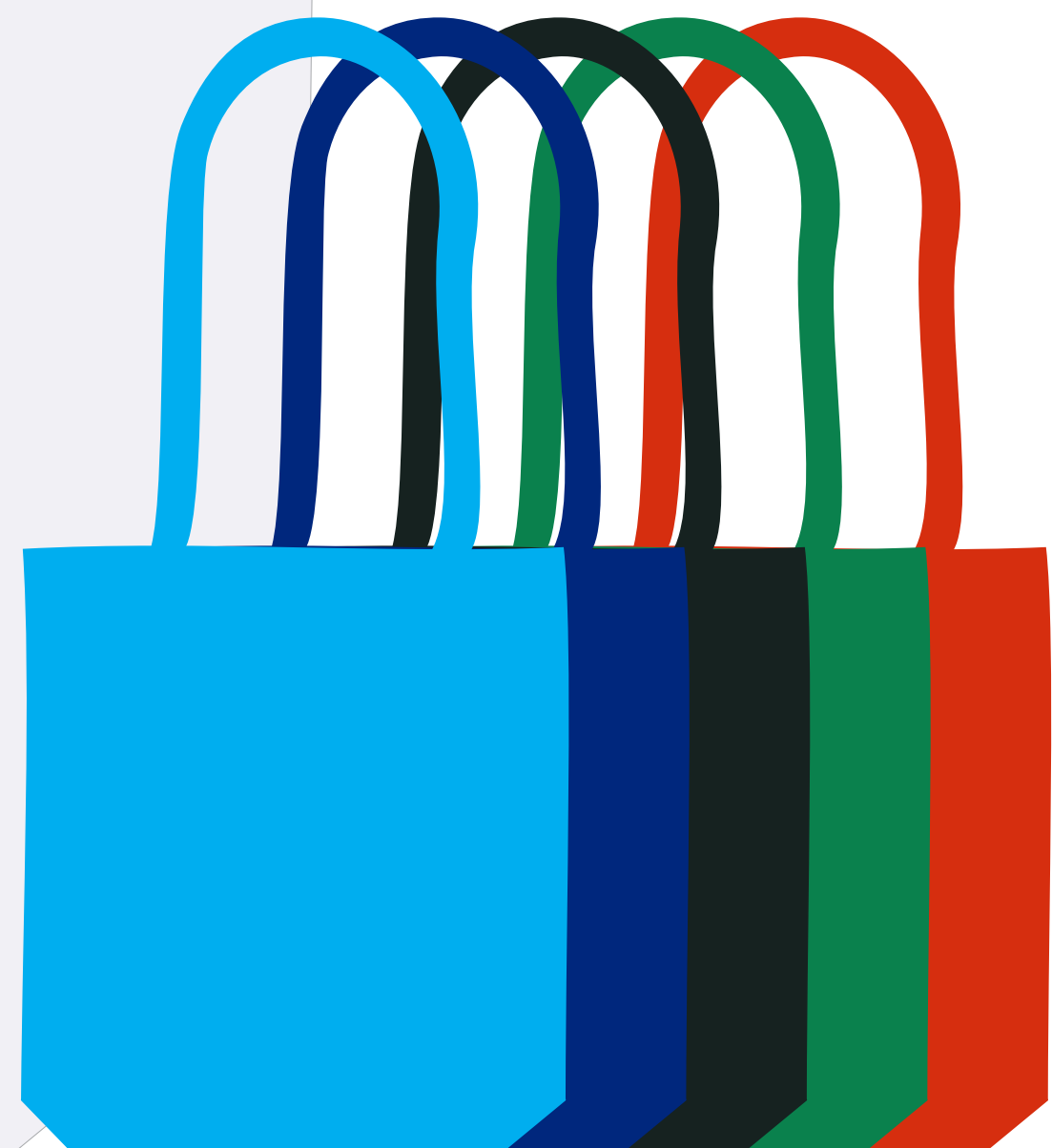
Print Area: 41mmL x 41mmH
Actual print size: xxmmL x xxmmH

Screen Print  PMS
XXXc

Nucolour Transfer 



BELOW IS 20% OF SIZE





Screen Print

Print area: 250mmL x 320mmH
Actual print size: xxmmL x xxmmH

Nucolour

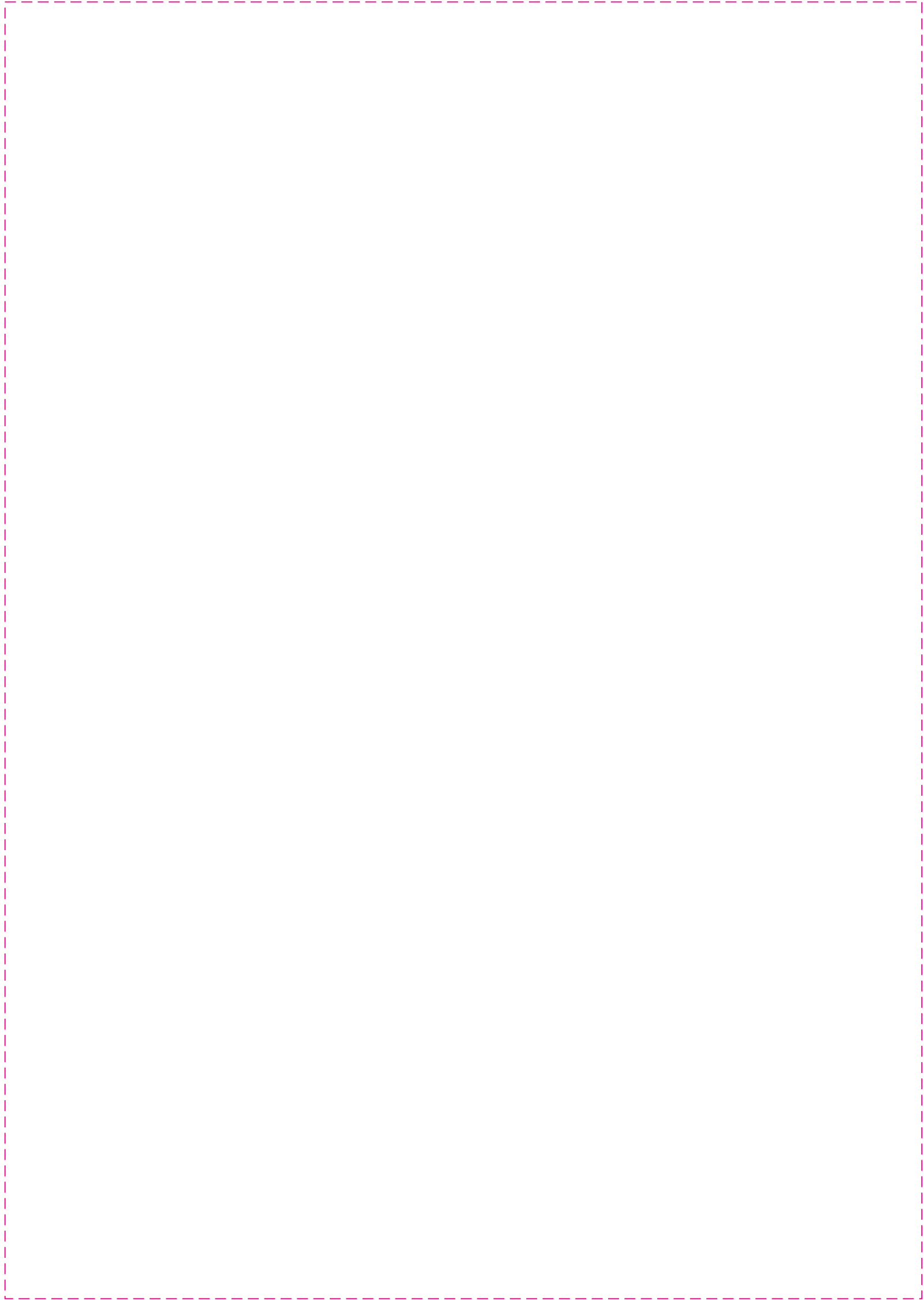
Print area: 210mmL x 297mmH
Actual print size: xxmmL x xxmmH

Finished print area - Screen Print 
Finished print area - Nucolour 

Film (Screen)



Full Colour Design at 100% size



White Layer

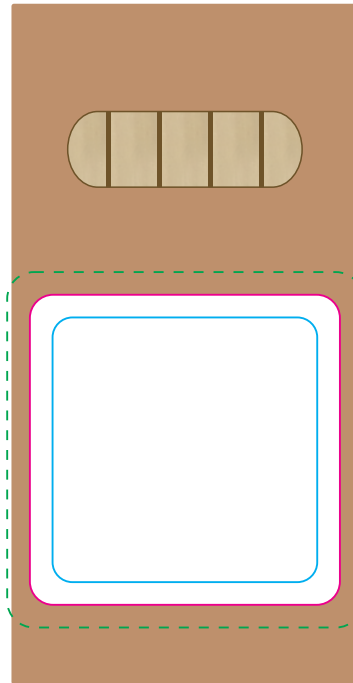
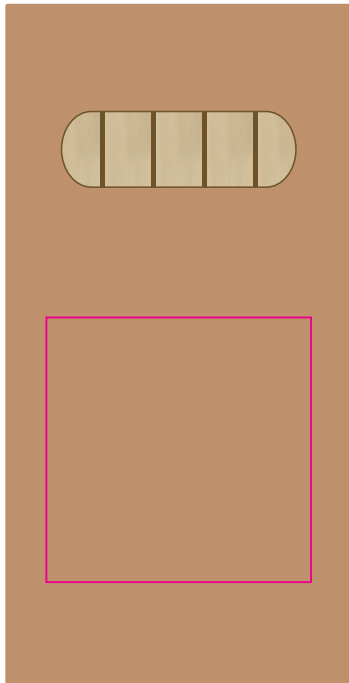


Pad Print  PMS
XXXc

CMYK Label 

CMYK Direct Digital 

Digital print will result in orange peel effect



Pad/Digital

Print Area: 35mmL x 35mmH



Actual print size: xxmmL x xxmmH

Finished print area 

Label

Print Area: 41mmL x 41mmH

Actual print size: xxmmL x xxmmH

Finished print area - Actual Size 
Finished print area - Text & Copy 
Bleed Requirement 