

Logo Here

Job # XXXXXX
Cust # XXXX-XC

LL5520 - Colouring Short Handle Cotton bag with Crayons - Short Handle Bag: INSERT Crayons: Assorted

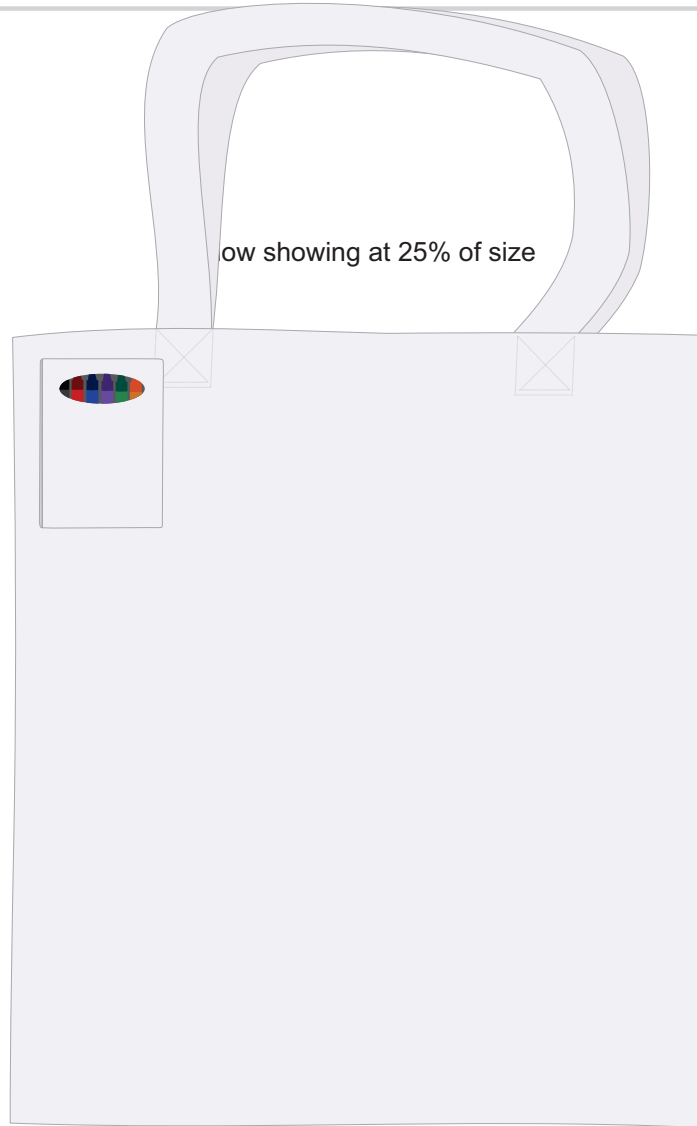
Screen Print PMS XXXc

Nucolour Transfer 

CMYK Label 

CMYK Direct Digital 

ow showing at 25% of size



Bags - Screen Print

Print area: 290mmL x 320mmH
Actual print size: xxmmL x xxmmH

Bags - Nucolour

Print area: 210mmL x 297mmH
Actual print size: xxmmL x xxmmH

Crayons - Digital

Print Area: 50mmL x 50mmH
Actual print size: xxmmL x xxmmH

Crayons - Label

Print Area: 50mmL x 50mmH
Actual print size: xxmmL x xxmmH

Screen Print  PMS
XXXc

Nucolour Transfer 





BELOW IS 20% OF SIZE



Screen Print
Print area: 290mmL x 320mmH
Actual print size: xxmmL x xxmmH

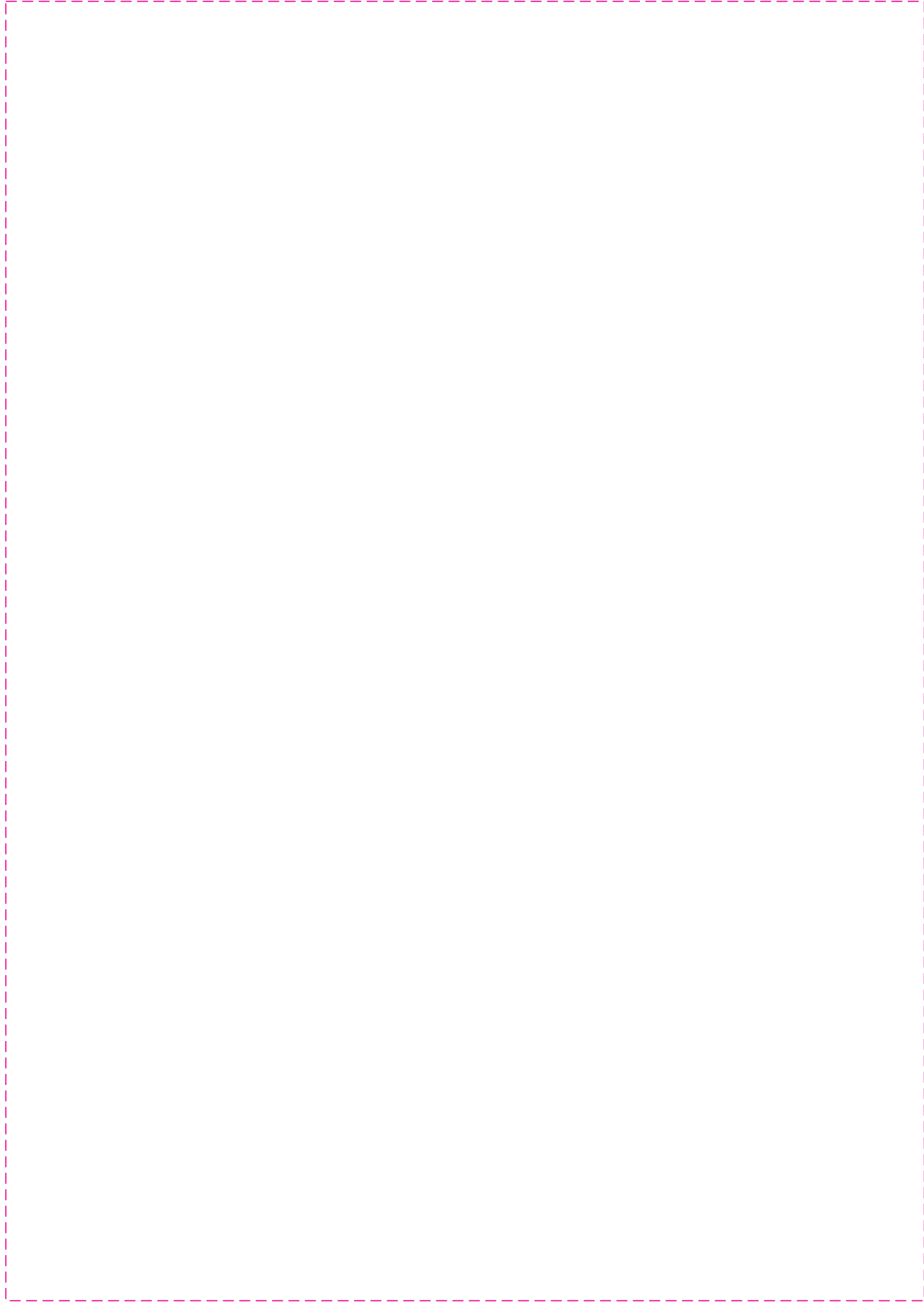
Nucolour
Print area: 210mmL x 297mmH
Actual print size: xxmmL x xxmmH

Finished print area - *Screen Print* 
Finished print area - *Nucolour* 

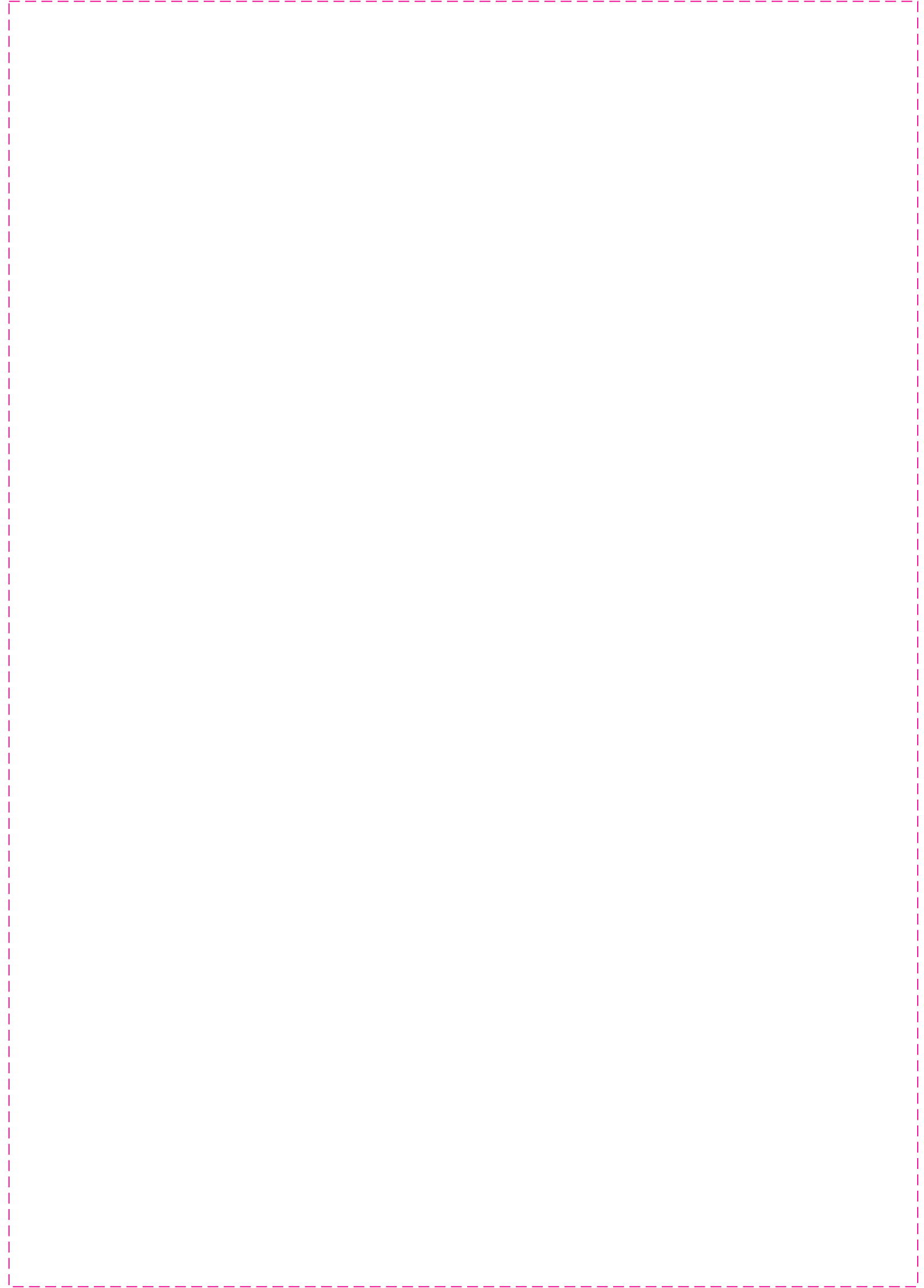
Film (Screen)



Full Colour Design at 100% size.



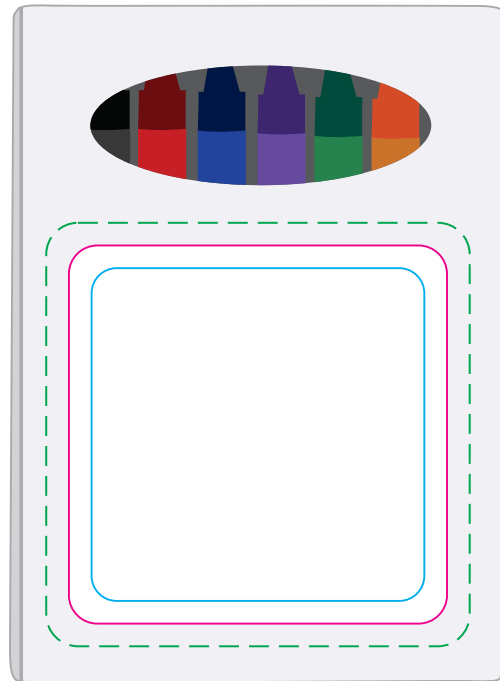
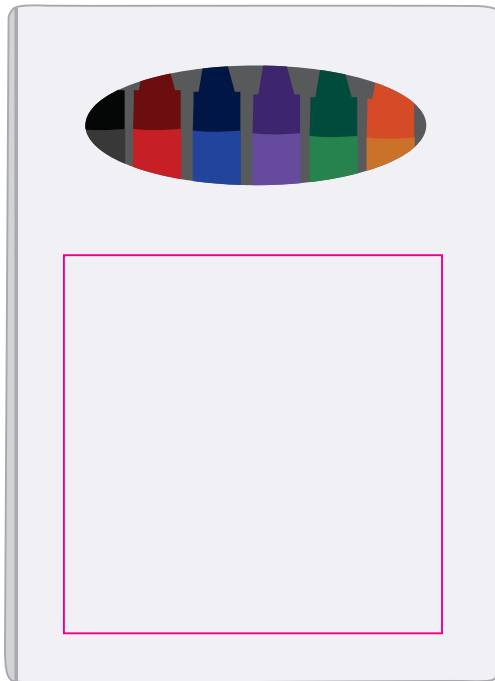
White Layer.



CMYK Label



CMYK Direct Digital



Digital

Print Area: 50mmL x 50mmH



Actual print size: xxmmL x xxmmH

Finished print area 

Label

Print Area: 50mmL x 50mmH

Actual print size: xxmmL x xxmmH

Finished print area - Actual Size 
Finished print area - Text & Copy 
Bleed Requirement 