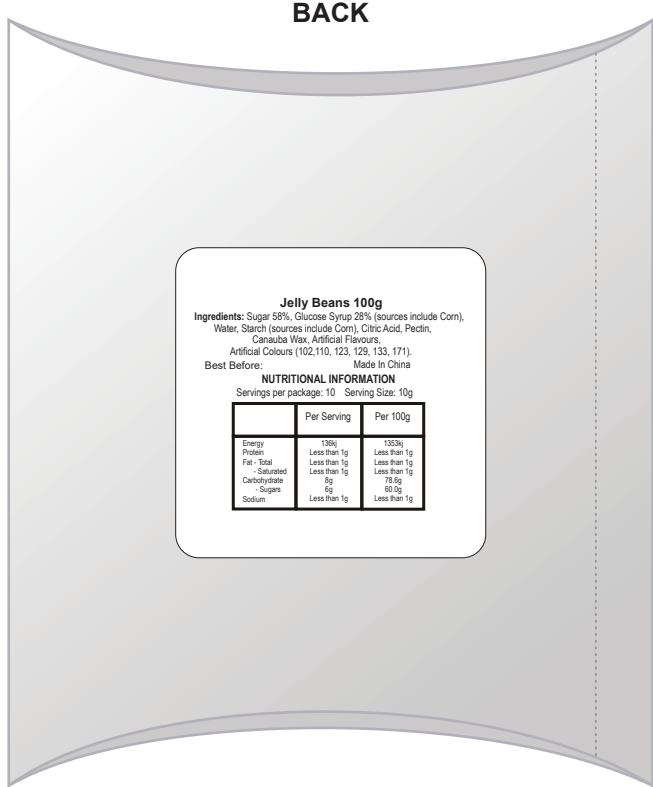
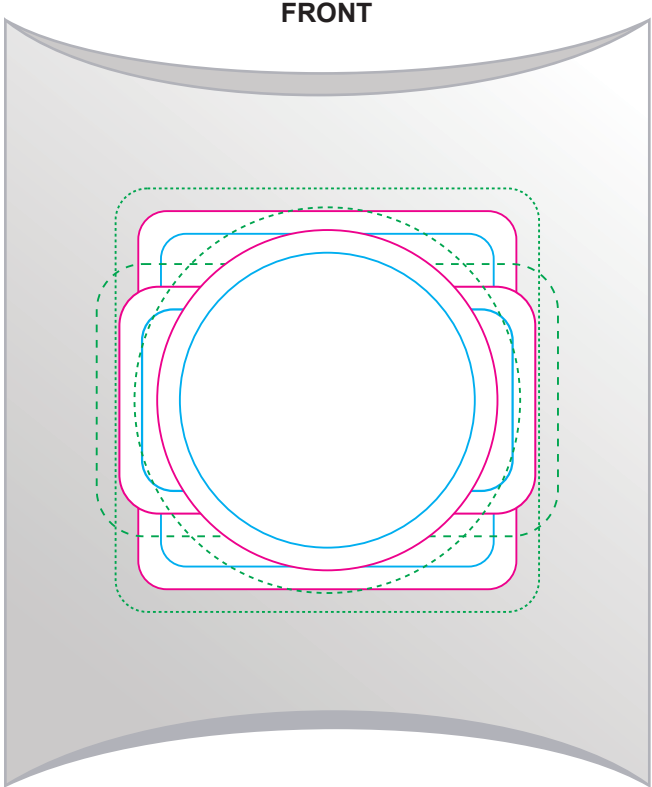


**LL4866 - Corporate Colour Jelly Beans in Pillow Pack - Jelly Bean Colours:**



Packing is commenced upon receipt of order.  
Orders cancelled or colour configurations altered may incur additional charges.



**Jelly Beans 100g**  
**Ingredients:** Sugar 58%, Glucose Syrup 28% (sources include Corn), Water, Starch (sources include Corn), Citric Acid, Pectin, Canauba Wax, Artificial Flavours, Artificial Colours (102,110, 123, 129, 133, 171).  
 Made in China  
**Best Before:**  
**NUTRITIONAL INFORMATION**  
 Servings per package: 10 Serving Size: 10g

	Per Serving	Per 100g
Energy	135kJ	1352kJ
Protein	Less than 1g	Less than 1g
Fat - Total	Less than 1g	Less than 1g
Saturated	Less than 1g	Less than 1g
Carbohydrate	8g	78.6g
Sugars	8g	60.0g
Sodium	Less than 1g	Less than 1g

Statutory Ingredients label is adhered to back of the pillow packs.

Print Area: 55mmL x 30mmH  
Actual print size: xxmmL x xxmmH

Print Area: 50mmL x 50mmH  
Actual print size: xxmmL x xxmmH

Print Area: 45mm Diameter  
Actual print size: xxmmL x xxmmH

Max print area for copy & text

Finished print area

Bleed line

LL4866 - Corporate Colour Jelly Beans in Pillow Pack - Jelly Bean Colours:

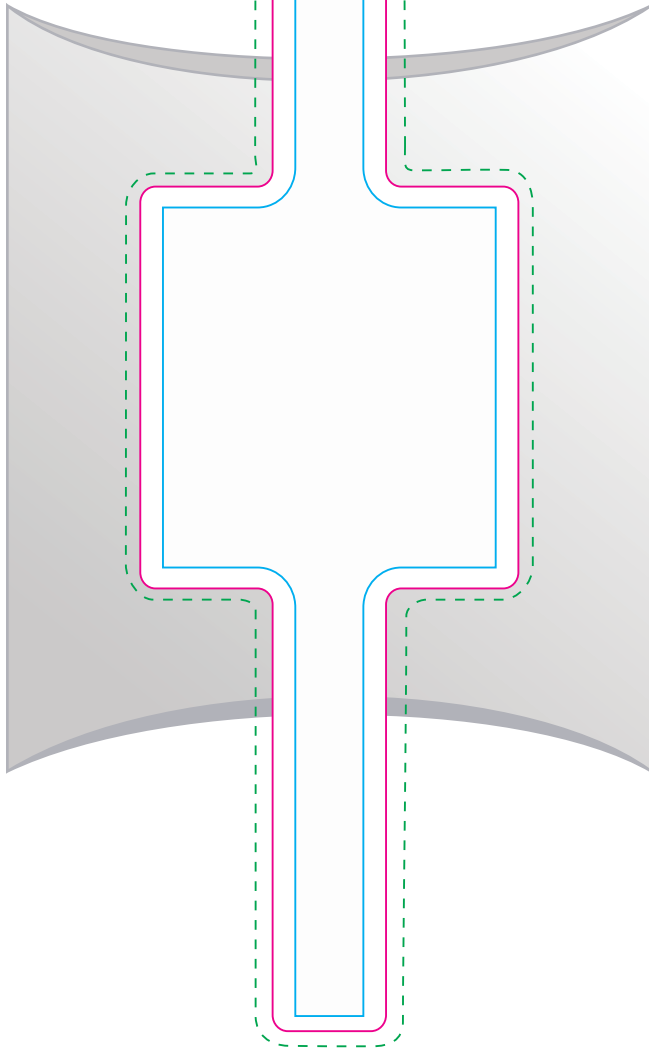
CMYK Label



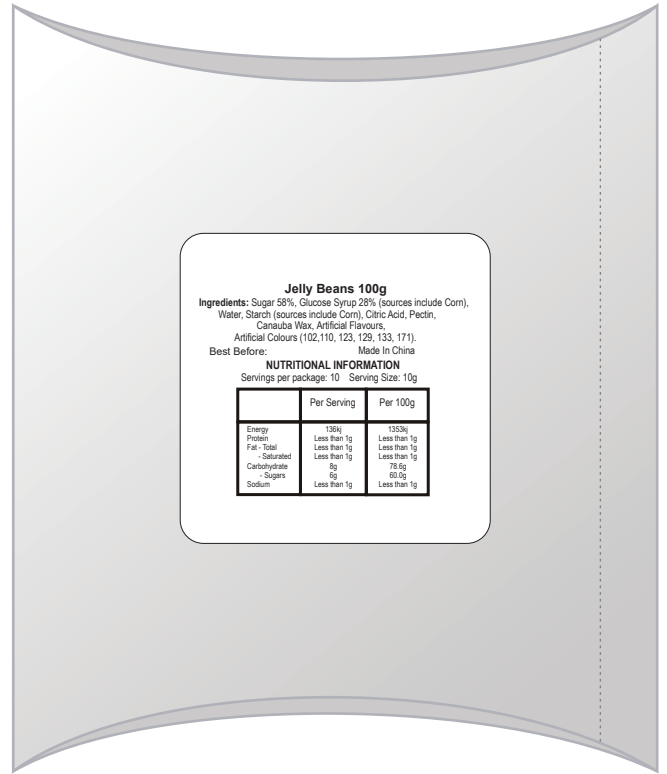
Packing is commenced upon receipt of order.  
Orders cancelled or colour configurations altered may incur additional charges.



FRONT



BACK



**Jelly Beans 100g**  
Ingredients: Sugar 58%, Glucose Syrup 28% (sources include Corn), Water, Starch (sources include Corn), Citric Acid, Pectin, Candurin Wax, Artificial Flavours, Artificial Colours (102, 110, 123, 129, 133, 171).  
Best Before: Made In China

**NUTRITIONAL INFORMATION**  
Servings per package: 10 Serving Size: 10g

	Per Serving	Per 100g
Energy	196j	1963%
Protein	Less than 1g	Less than 1g
Fat - Total	Less than 1g	Less than 1g
- Saturated	Less than 1g	Less than 1g
Carbohydrate	8g	78.8g
- Sugars	6g	60.0g
Sodium	Less than 1g	Less than 1g

Statutory Ingredients label is adhered to back of the pillow packs.

Print Area: Band 50mmL x 170mmH  
Actual print size: xxmmL x xxmmH

Max print area for copy & text —  
 Finished print area —  
 Bleed line - - -