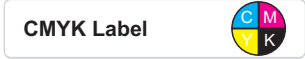
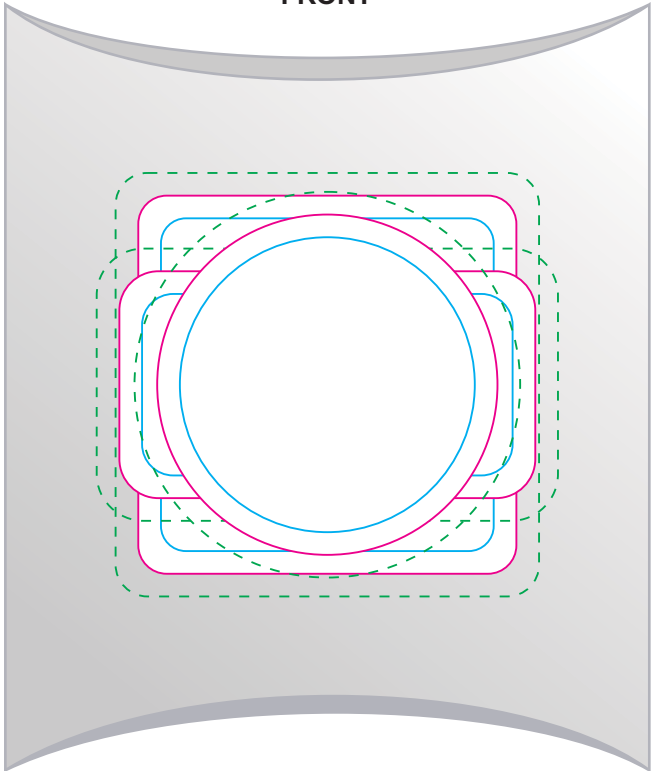


LL33015 - M&M's in Pillow Pack



Some chipping/break up of M&M's is unavoidable and considered acceptable.

FRONT



BACK



Milk Chocolate M&M's
Ingredients: Milk Chocolate 68% (Sugar, Cocoa Mass, Milk Solids, Cocoa Butter, Vegetable Fat, Emulsifier (Soy Lecithin), Salt, Sugar, Starch (Sources Include Wheat), Glucose Syrup (Sources Include Wheat), Vegetable Gum (d 14), Colours (171, 129, 133, 110, 102), Thickener (Dextrin), Gelling Agent (E53).
 Milk Chocolate Contains a Minimum of 28% Cocoa Solids & 22% Milk Solids
May Be Present: Peanuts, Tree Nuts, Barley.

Best Before: Made in Australia

NUTRITIONAL INFORMATION
 Servings per package: 3.8 Serving Size: 25g

	95g	Per Serving	Per 100g
ENERGY	505kJ		2020kJ
PROTEIN	1.2g		4.7g
FAT -total	4.8g		19.3g
- saturated	3.0g		11.9g
CARBOHYDRATE	17.6g		70.4g
- sugars	16.5g		65.9g
SODIUM	15mg		61mg

Produced for:
 Phone:
 www:

Statutory Ingredients label is adhered to back of the pillow packs.
Please check your details.

Print Area: 55mmL x 30mmH
 Actual print size: xxmmL x xxmmH

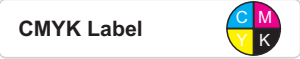
Print Area: 50mmL x 50mmH
 Actual print size: xxmmL x xxmmH

Print Area: 45mm Diameter
 Actual print size: xxmmL x xxmmH

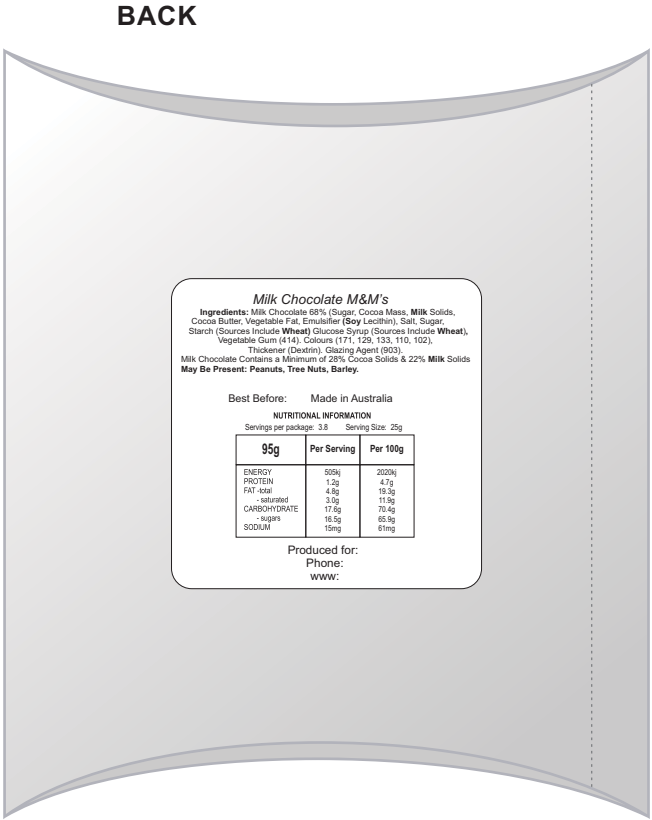
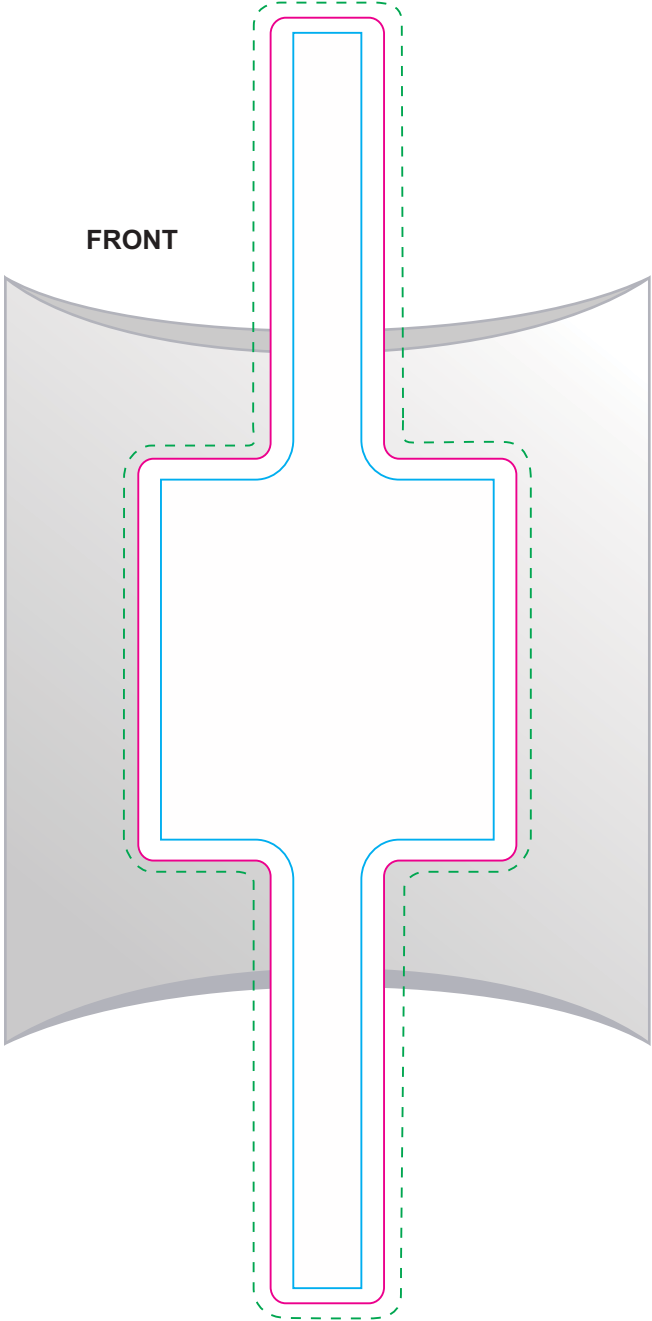
Max print area for copy & text _____
 Finished print area _____
 Bleed line - - - - -



LL33015 - M&M's in Pillow Pack



Some chipping/break up of M&M's is unavoidable and considered acceptable.



Statutory Ingredients label is adhered to back of the pillow packs.
Please check your details.



Print Area: Band 50mmL x 170mmH
 Actual print size: xxmmL x xxmmH

Max print area for copy & text
 Finished print area
 Bleed line