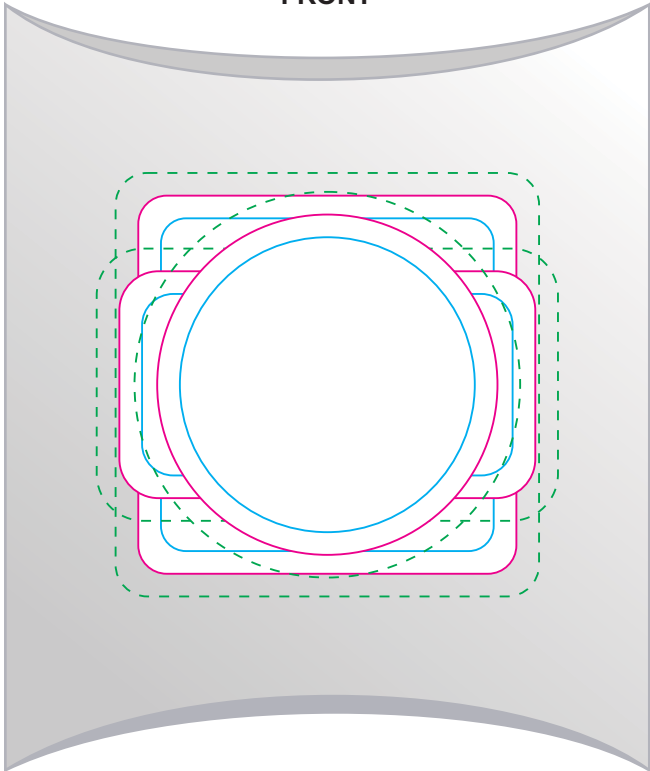


LL33015 - M&M's in Pillow Pack

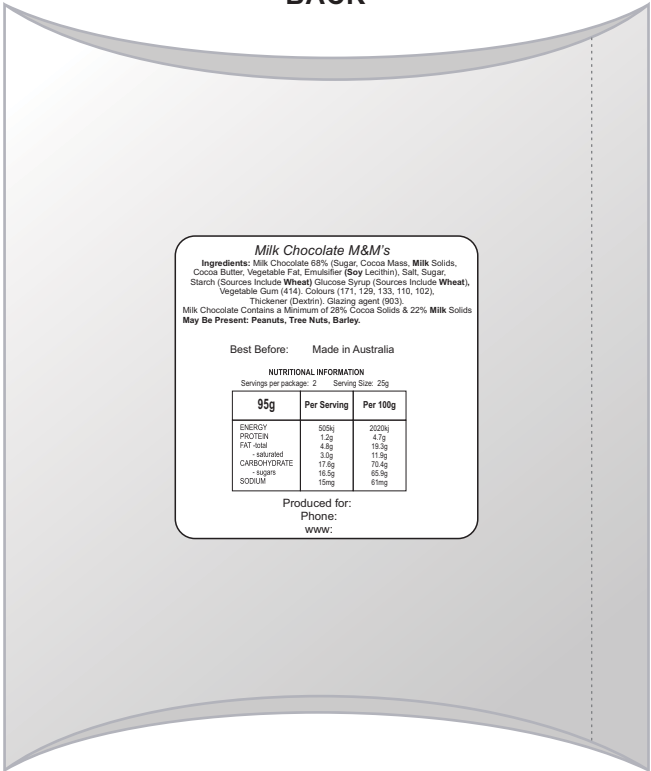


Some chipping/break up of M&M's is unavoidable and considered acceptable.

FRONT



BACK



Milk Chocolate M&M's
Ingredients: Milk Chocolate 68% (Sugar, Cocoa Mass, Milk Solids, Cocoa Butter, Vegetable Fat, Emulsifier (Soy Lecithin), Salt, Sugar, Starch (Sources Include Wheat) Glucose Syrup (Sources Include Wheat), Vegetable Gum (414), Colours (171, 129, 133, 110, 102), Thickener (Dextrin), Glazing agent (903).
 Milk Chocolate Contains a Minimum of 28% Cocoa Solids & 22% Milk Solids
 May Be Present: Peanuts, Tree Nuts, Barley.

Best Before: Made in Australia

NUTRITIONAL INFORMATION
 Servings per package: 2 Serving Size: 25g

	95g	Per Serving	Per 100g
ENERGY		509kJ	2020kJ
PROTEIN		1.2g	4.7g
FAT total		4.8g	19.3g
- saturated		3.0g	11.9g
CARBOHYDRATE		17.5g	70.4g
- sugars		16.5g	65.9g
SODIUM		15mg	61mg

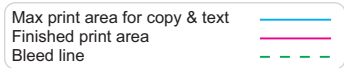
Produced for:
 Phone:
 www:

Statutory Ingredients label is adhered to back of the pillow packs.
Please check your details.

Print Area: 55mmL x 30mmH
Actual print size: xxmmL x xxmmH

Print Area: 50mmL x 50mmH
Actual print size: xxmmL x xxmmH

Print Area: 45mm Diameter
Actual print size: xxmmL x xxmmH

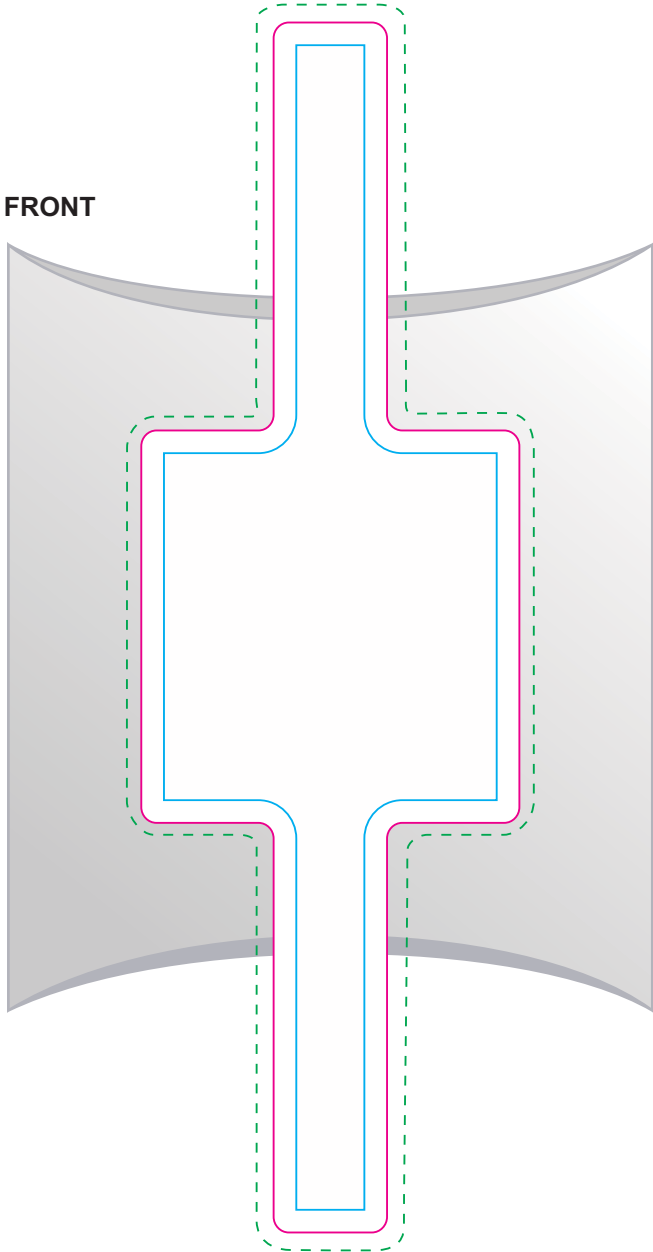


LL33015 - M&M's in Pillow Pack

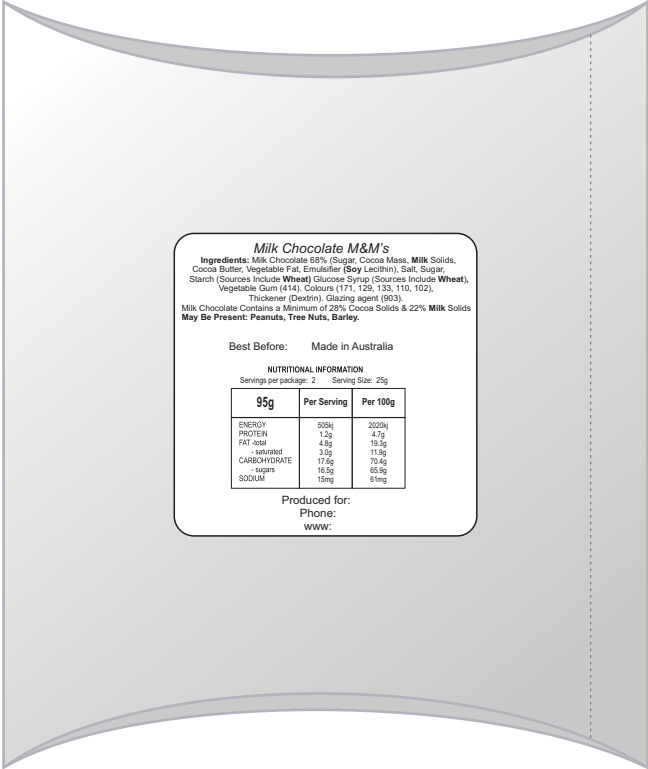


Some chipping/break up of M&M's is unavoidable and considered acceptable.

FRONT



BACK



Milk Chocolate M&M's
 Ingredients: Milk Chocolate 58% (Sugar, Cocoa Mass, Milk Solids, Cocoa Butter, Vegetable Fat, Emulsifier (Soy Lecithin), Salt, Sugar, Starch (Sources Include **Wheat**)) Glucose Syrup (Sources Include **Wheat**), Vegetable Gum (414), Colours (171, 129, 133, 110, 102), Thickener (Dextrin), Glazing agent (903).
 Milk Chocolate Contains a Minimum of 28% Cocoa Solids & 22% Milk Solids.
May Be Present: Peanuts, Tree Nuts, Barley.

Best Before: Made in Australia

NUTRITIONAL INFORMATION
 Servings per package: 2 Serving Size: 25g

95g	Per Serving	Per 100g
ENERGY	595kJ	2020kJ
PROTEIN	1.2g	4.1g
FAT -total	4.8g	19.3g
-saturated	3.0g	11.0g
CARBOHYDRATE	17.6g	70.4g
-sugars	16.5g	65.9g
SODIUM	15mg	61mg

Produced for:
 Phone:
 www:

Statutory Ingredients label is adhered to back of the pillow packs.
Please check your details.



Print Area: Band 50mmL x 160mmH
Actual print size: xxmmL x xxmmH

Max print area for copy & text ————
 Finished print area ————
 Bleed line - - - - -