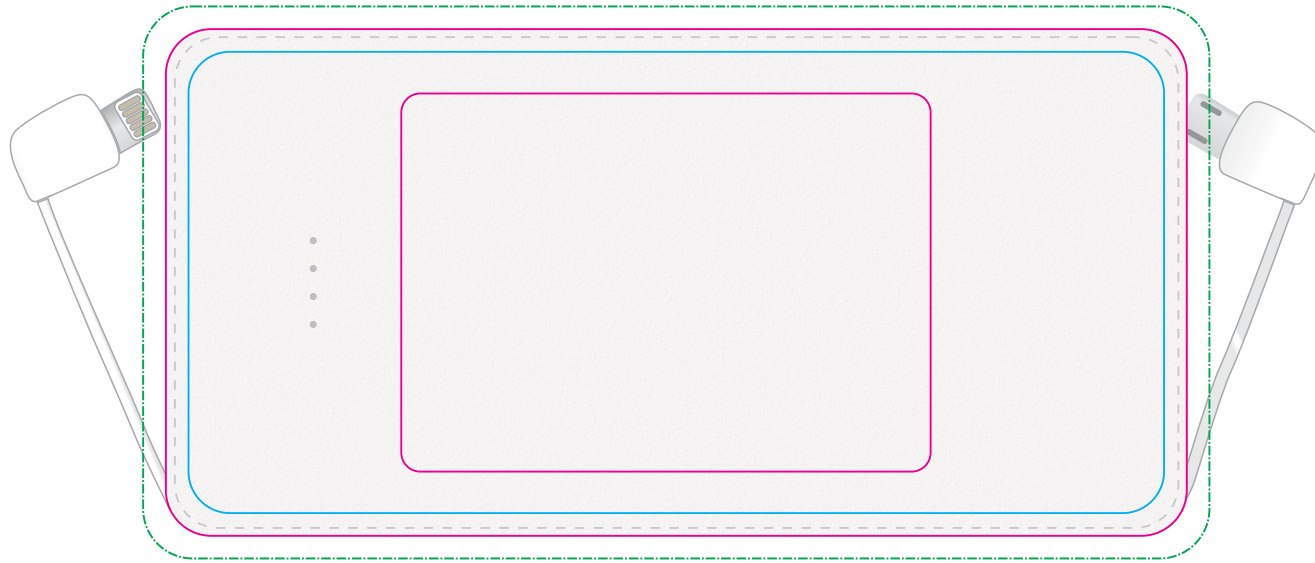


LL0519 - Nova Power Bank - White

CMYK Direct Digital



**DIGITAL
Standard**

Print Area: 70mmL x 50mmH

Actual print size: xxmmL x xxmmH

Edge to Edge

Print Area: 135mmL x 67mmH

Actual print size: xxmmL x xxmmH

Max print area for copy & text
Finished print area
Bleed line



LL0519 - Nova Power Bank with Label - White & Natural

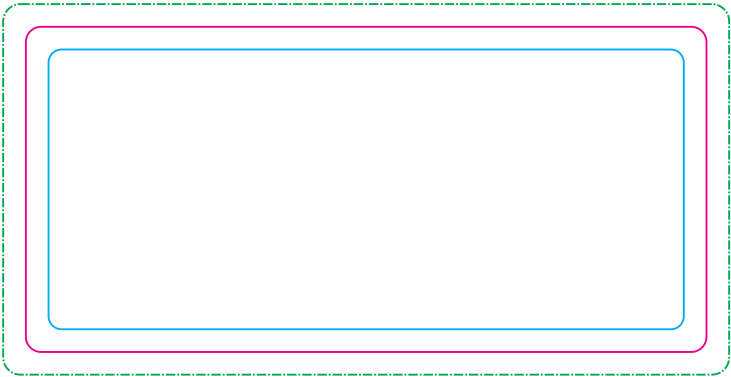
CMYK Direct Digital



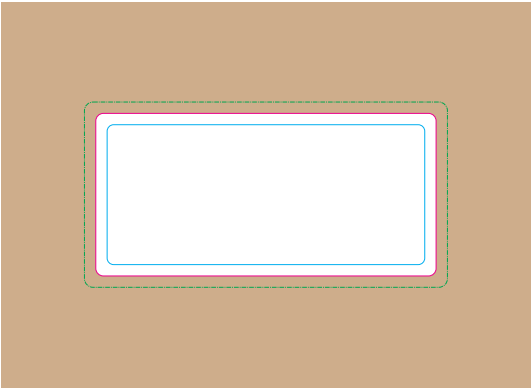
CMYK Label



Label to size



Natural gift box with Label - Showing at 50%



DIGITAL
Standard

Print Area: 70mmL x 50mmH
Actual print size: xxmmL x xxmmH

Edge to Edge

Print Area: 135mmL x 67mmH
Actual print size: xxmmL x xxmmH

Max print area for copy & text
Finished print area
Bleed line



Label

Print Area: 90mmL x 43mmH
Actual print size: xxmmL x xxmmH

Max print area for copy & text
Finished print area
Bleed line

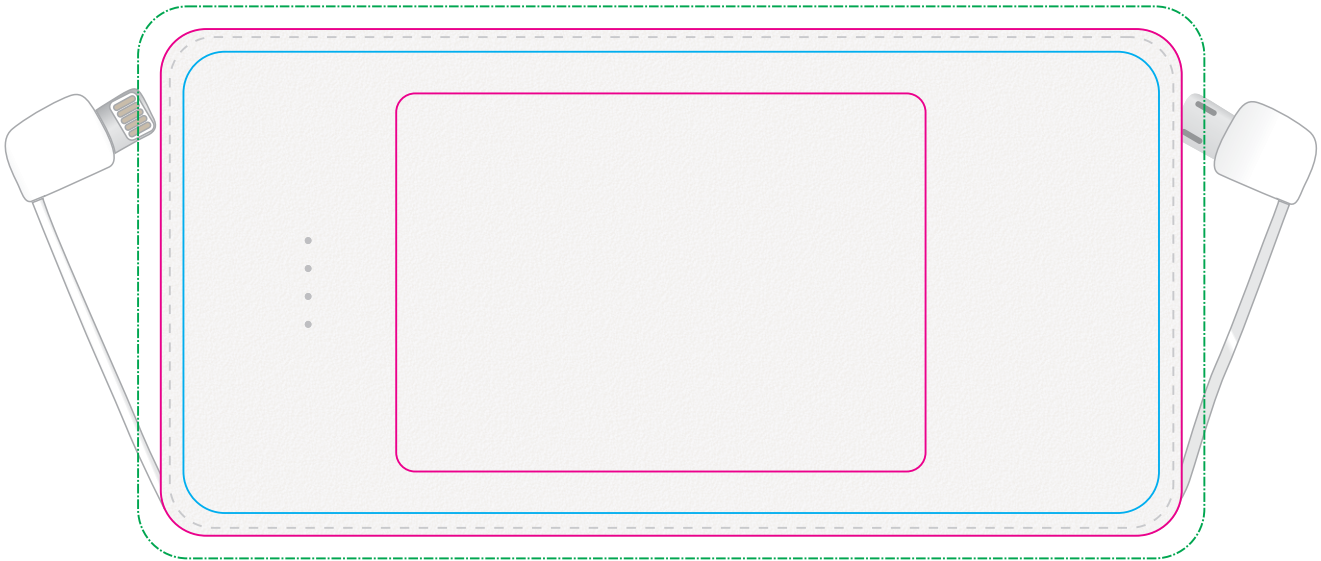


LL0519 - Nova Power Bank with Digital Sleeve - White + Sleeve

CMYK Direct Digital

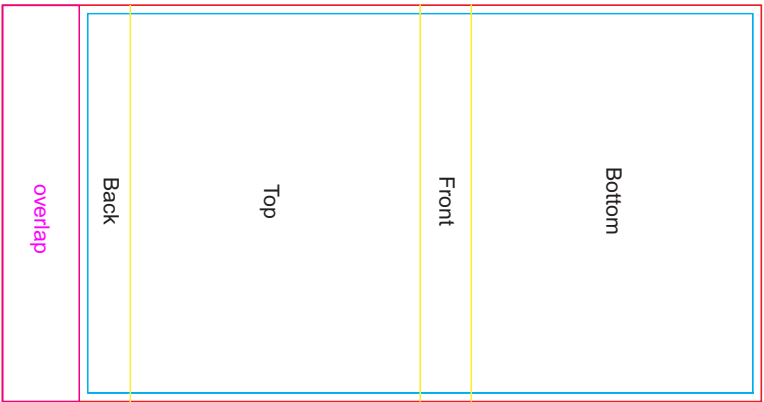


CMYK Direct Digital



Below is 50% of actual size

Sleeve on box



DIGITAL

Standard

Print Area: 70mmL x 50mmH

Actual print size: xxmmL x xxmmH

Edge to Edge

Print Area: 135mmL x 67mmH

Actual print size: xxmmL x xxmmH

Max print area for copy & text

Finished print area

Bleed line



Sleeve

Print Area: 140mmL x 267.8mmH

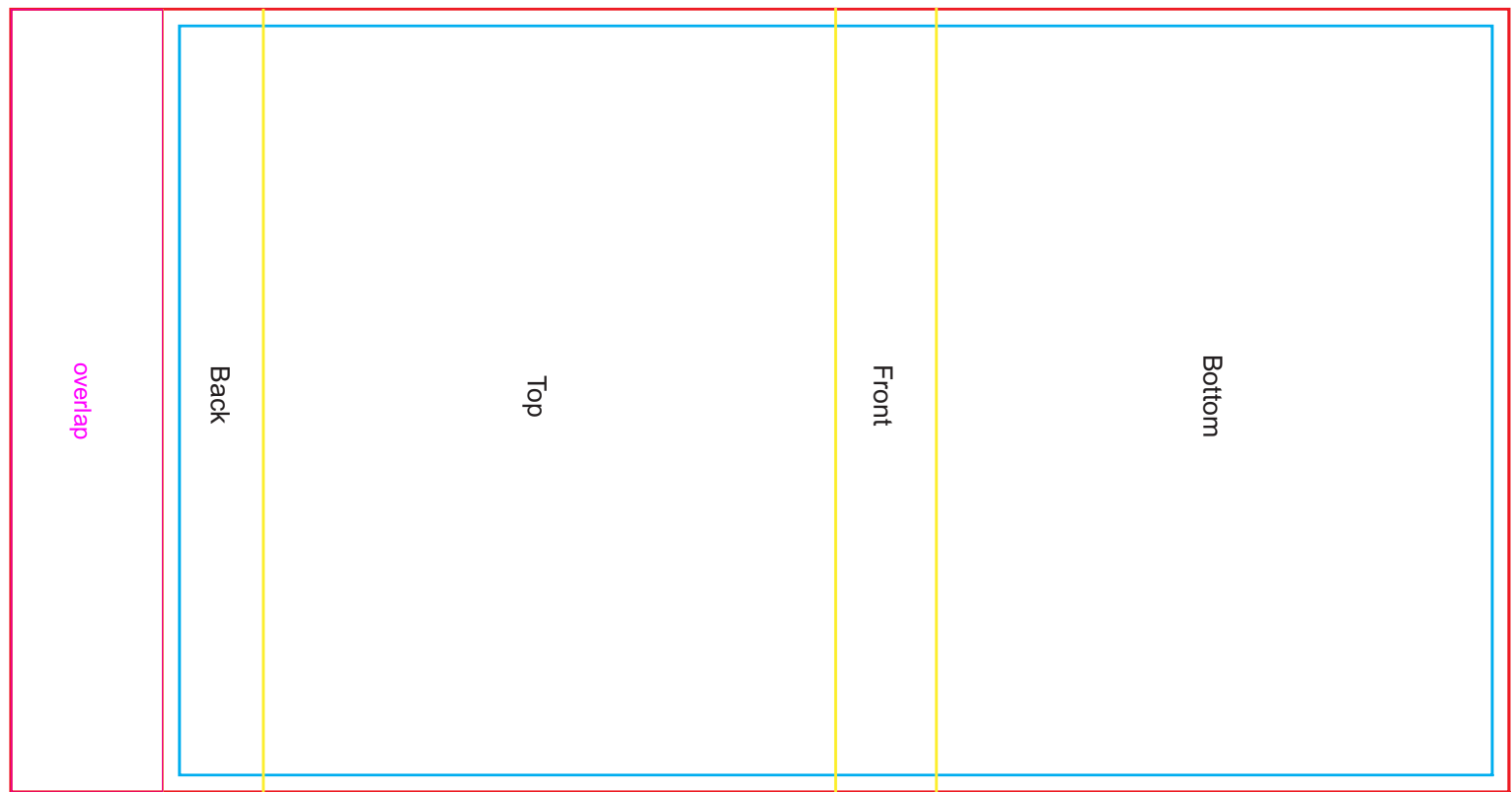
Actual print size: xxmmL x xxmmH

Max print area for copy & text

Finished print area

Folds





Sleeve

Print Area: 140mmL x 267.8mmH

Actual print size: xxmmL x xxmmH

Max print area for copy & text

Finished print area

Folds

A legend box containing three horizontal lines: a blue line, a red line, and a yellow line, corresponding to the lines used in the sleeve layout diagram.