

LL0446 - Flair Stainless Steel Coffee Cup - Black/Black (Matte) & White/Cool Grey (Gloss)

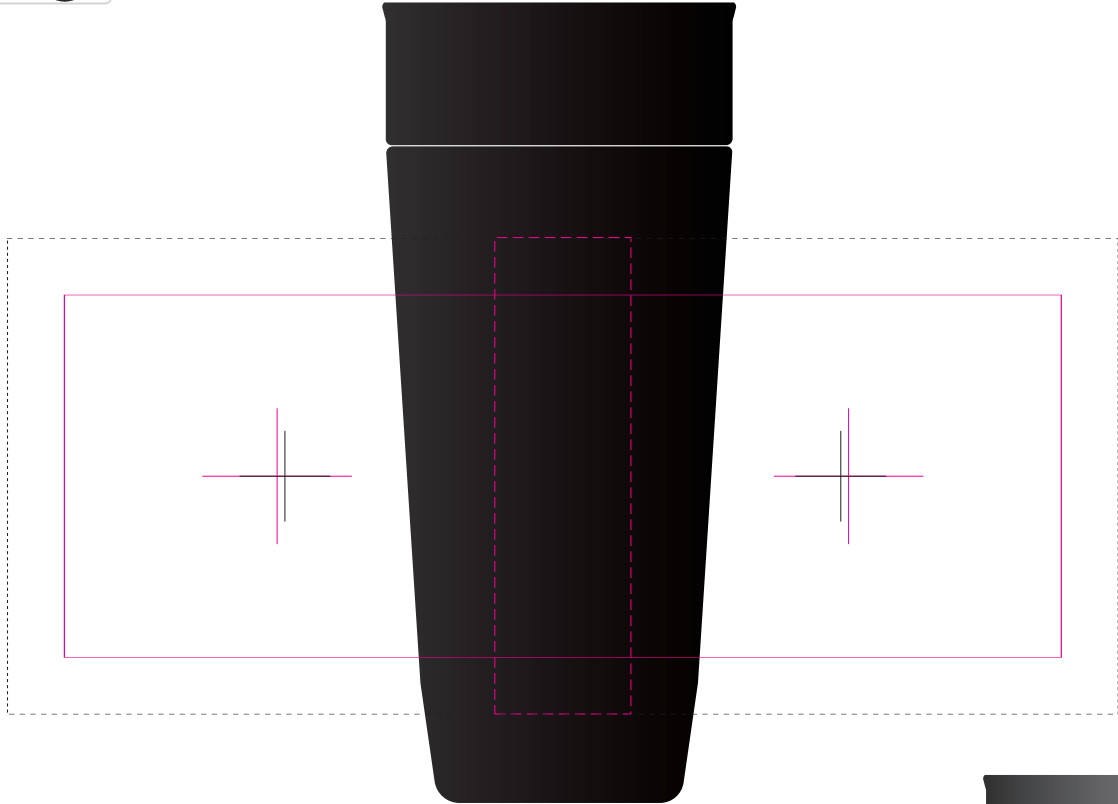
Roll Print  PMS XXXc

Laser Engrave 

CMYK Direct Digital 

Rotary Digital 

Item at 60%







Roll
Print Area: 220mmL x 80mmH
Actual print size: xxmmL x xxmmH


Digital
Print Area: 30mmL x 105mmH
Actual print size: xxmmL x xxmmH

Digital Rotary - Joined Wrap
Print area: 245.04mmL x 105mmH
Actual print size: xxmmL x xxmmH

Laser - Min Thickness required is 0.7mm
Print Area: 30mmL x 105mmH
Actual print size: xxmmL x xxmmH

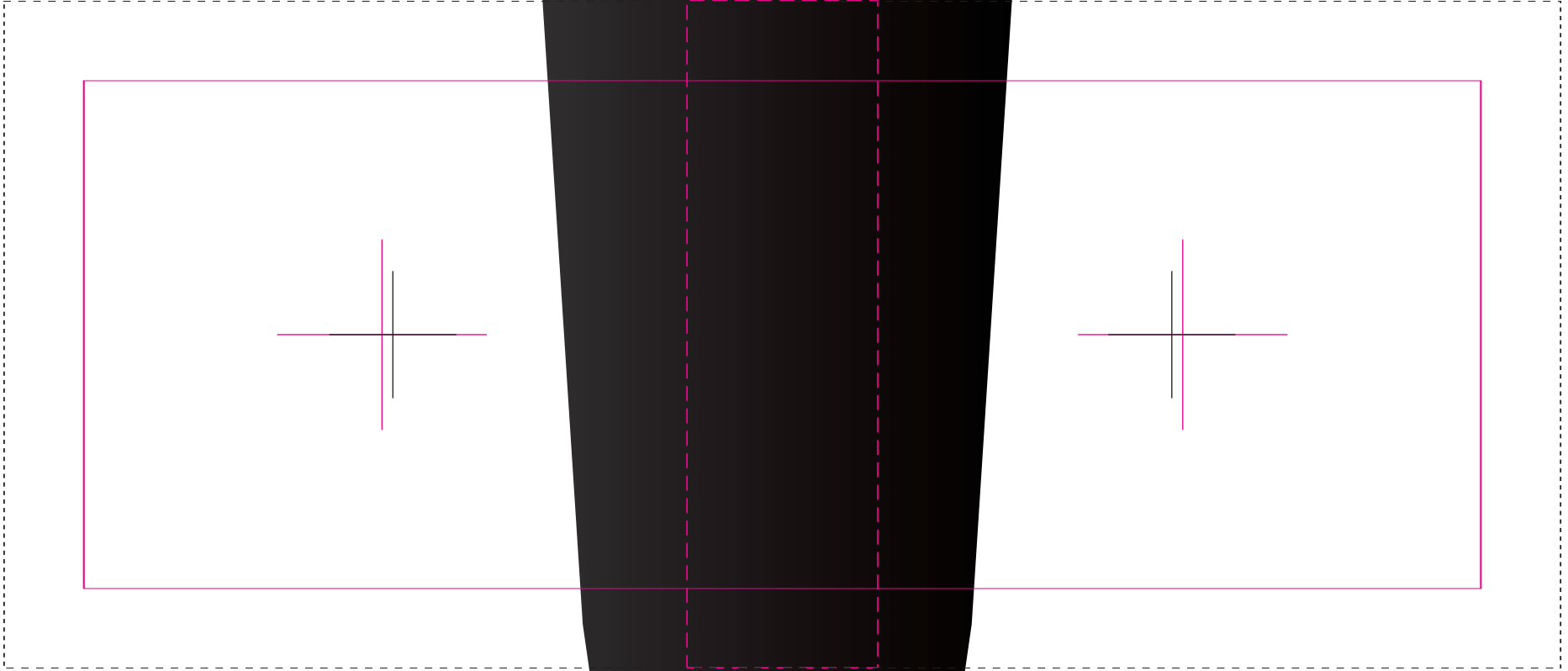
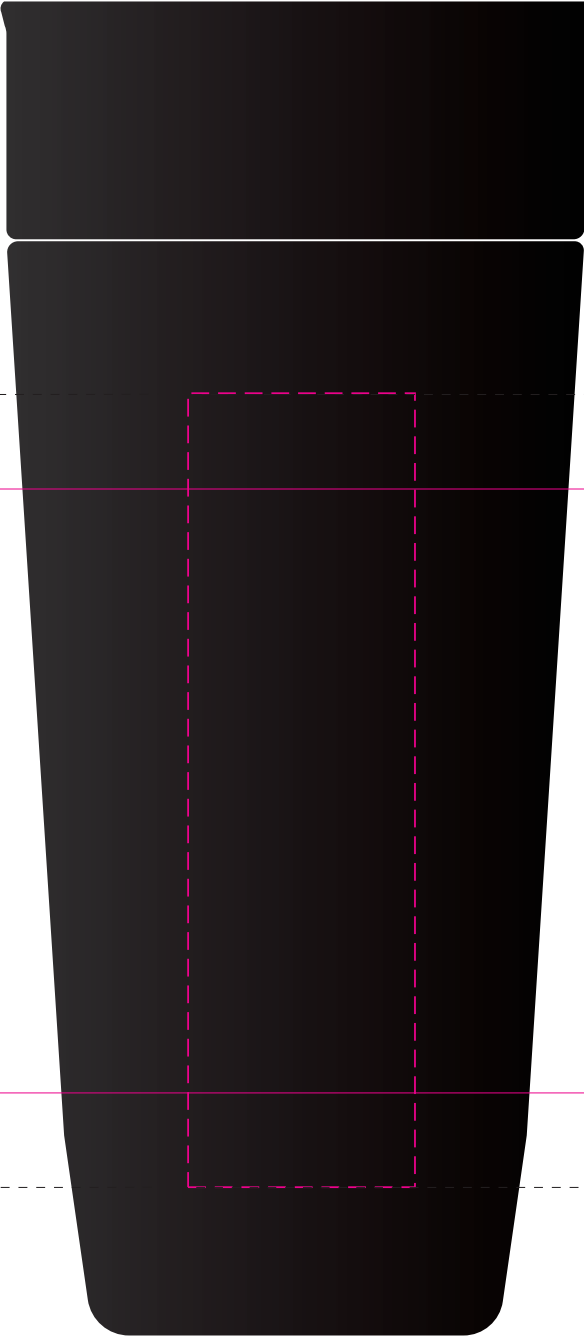
Finished print area - Roll/Screen 
Finished print area - Digital/Laser 
Finished print area - Digital Rotary 
Approx opposite positions 

Roll Print  PMS
XXXc

Laser Engrave 

CMYK Direct Digital 

Rotary Digital 

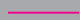





Roll
Print Area: 220mmL x 80mmH
Actual print size: xxmmL x xxmmH

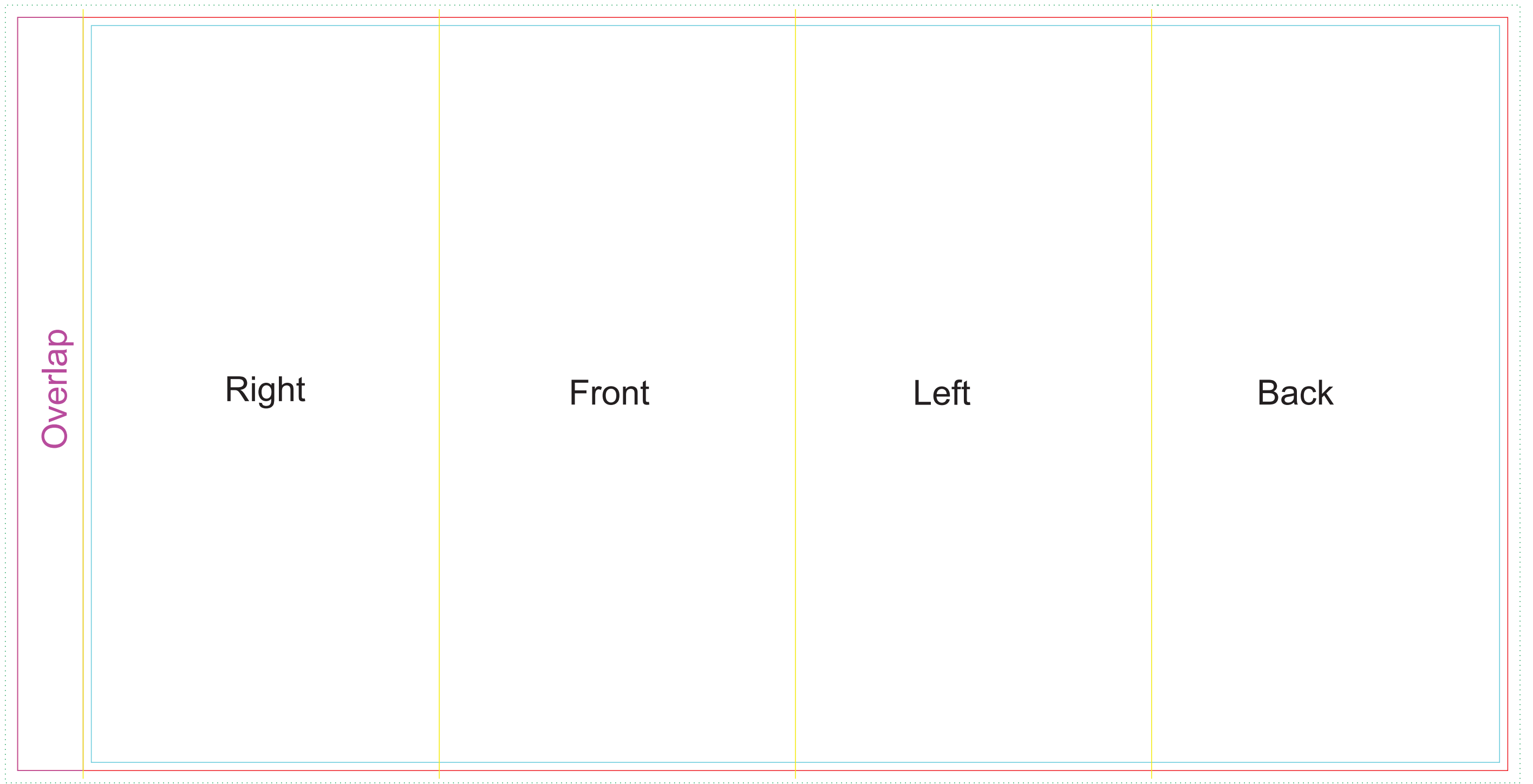
Digital
Print Area: 30mmL x 105mmH
Actual print size: xxmmL x xxmmH

Digital Rotary - Joined Wrap
Print area: 245.04mmL x 105mmH
Actual print size: xxmmL x xxmmH

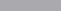
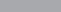
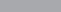
Laser - Min Thickness required is 0.7mm
Print Area: 30mmL x 105mmH
Actual print size: xxmmL x xxmmH

Finished print area - Roll/Screen 
Finished print area - Digital/Laser 
Finished print area - Digital Rotary 
Approx opposite positions 





Sleeve
Print Area: 364mmL x 184mmH
Actual print size: xxmmL x xxmmH

Max print area for copy & text	
Finished print area	
Folds	
Bleed Requirement	