

LL0271 - Bamboo Ranger Fast Wireless Charger - Bamboo

Pad Print

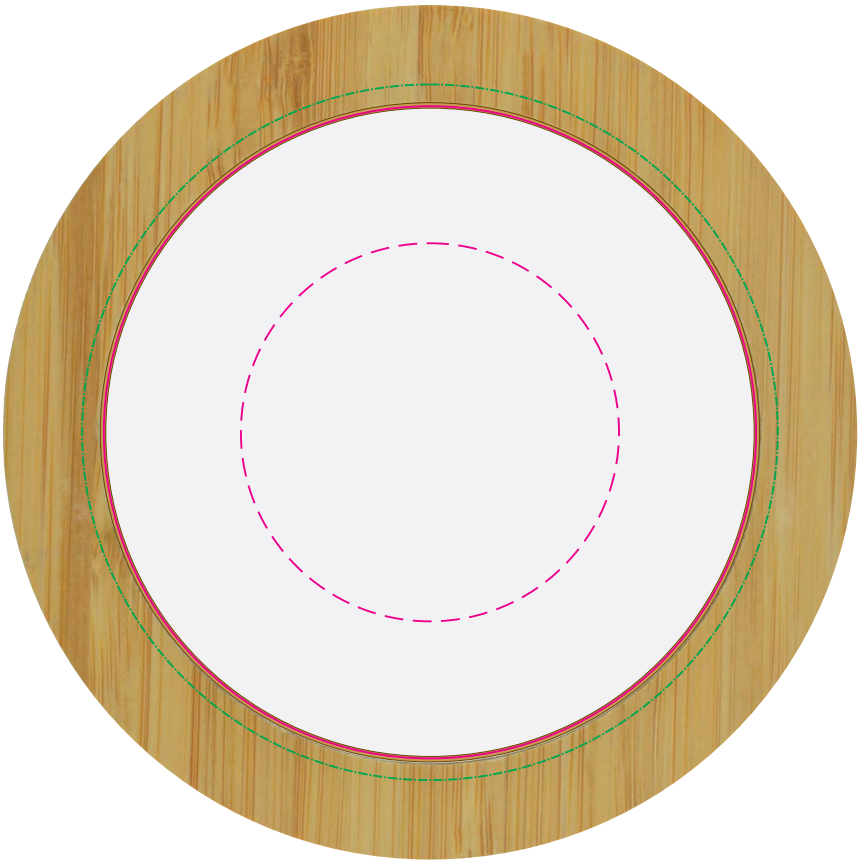


PMS
XXXc

CMYK Direct Digital



USB END



Pad
Print Area: 50mm Diameter
Actual print size: xxmmL x xxmmH

Digital - Edge to Edge
Print Area: 86mm Diameter
Actual print size: xxmmL x xxmmH

Finished print area - Pad
Finished print area - Edge to Edge Digital
Digital Bleed



LL0271 - Bamboo Ranger Fast Wireless Charger with Label - Bamboo + Label

Pad Print



PMS
XXXc

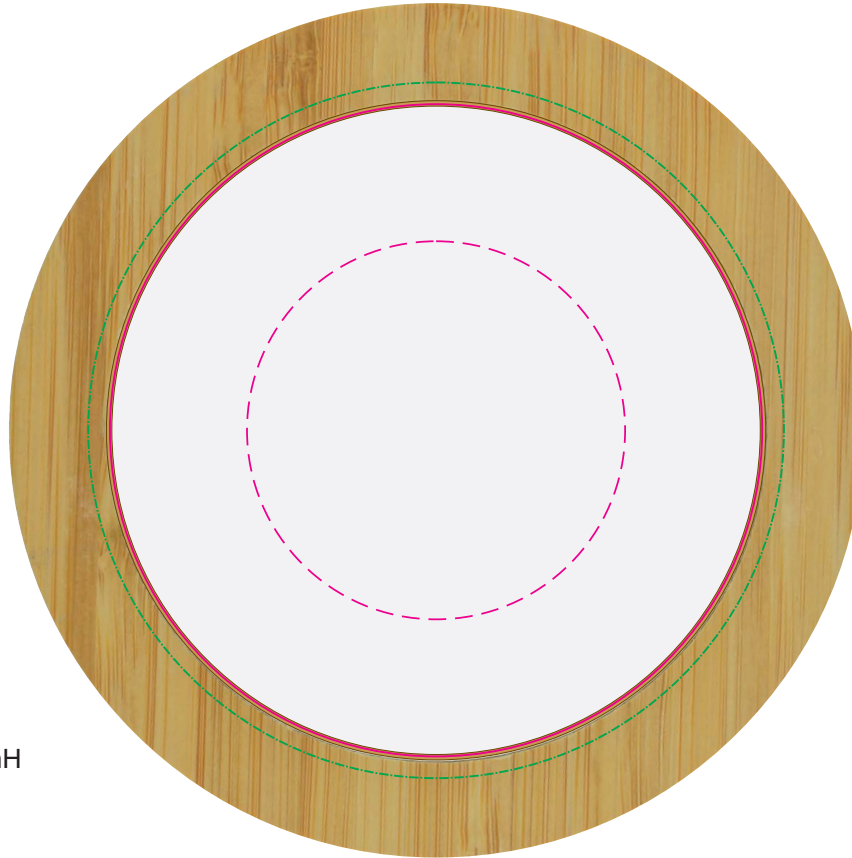
CMYK Direct Digital



CMYK Label



USB END



Pad

Print Area: 50mm Diameter

Actual print size: xxmmL x xxmmH

Digital - Edge to Edge

Print Area: 86mm Diameter

Actual print size: xxmmL x xxmmH

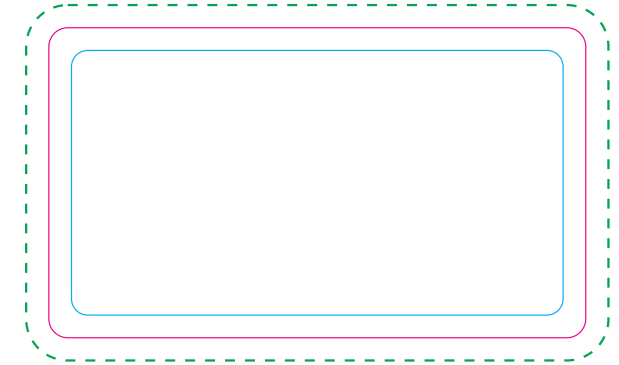
Finished print area - Pad



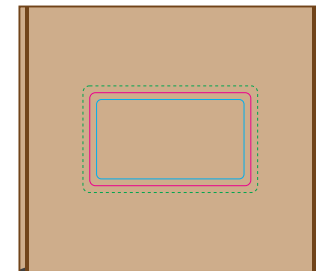
Finished print area - Edge to Edge Digital



Digital Bleed



Box Showing at 30% size for positioning



Label

Print Area: 71mmL x 41mmH

Actual print size: xxmmL x xxmmH

Max print area for copy & text



Finished print area



Label Bleed



LL0271 - Bamboo Ranger Fast Wireless Charger with Sleeve - Bamboo + Sleeve

Pad Print



PMS
XXXc

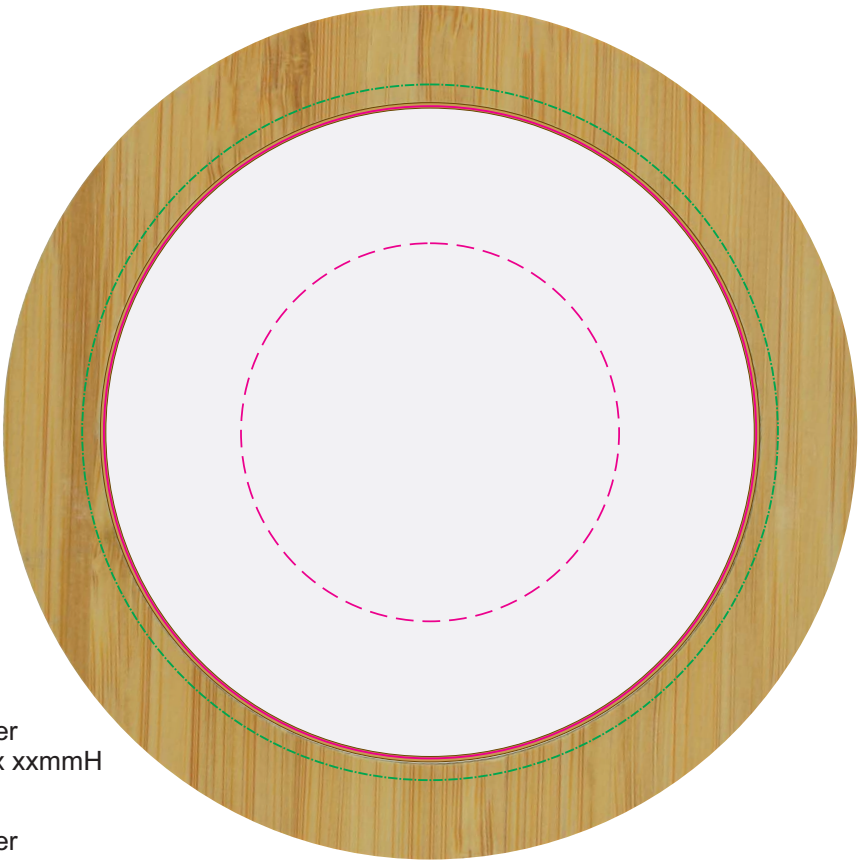
CMYK Direct Digital



CMYK Direct Digital



USB END



Pad

Print Area: 50mm Diameter
Actual print size: xxmmL x xxmmH

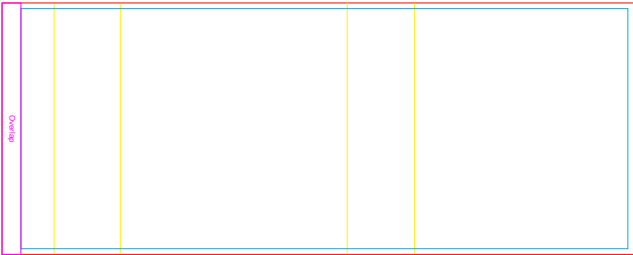
Digital - Edge to Edge

Print Area: 86mm Diameter
Actual print size: xxmmL x xxmmH

Finished print area - Pad
Finished print area - Edge to Edge Digital
Digital Bleed



Sleeve on box - showing at 25%



Sleeve

Print Area: 334mmL x 133mmH
Actual print size: xxmmL x xxmmH

Max print area for copy & text
Finished print area
Folds





Sleeve
Print Area: 334mmL x 133mmH
Actual print size: xxmmL x xxmmH

Max print area for copy & text

Finished print area

Folds